

National and regional guidance service co-ordination in Finland

Raimo Vuorinen, Ph.D.
Project Manager, Institute for Educational Research
University of Jyväskylä, Finland

Third CareersNet meeting
19-20 September 2019, Rome, Italy





Ministry of
Education
and Culture

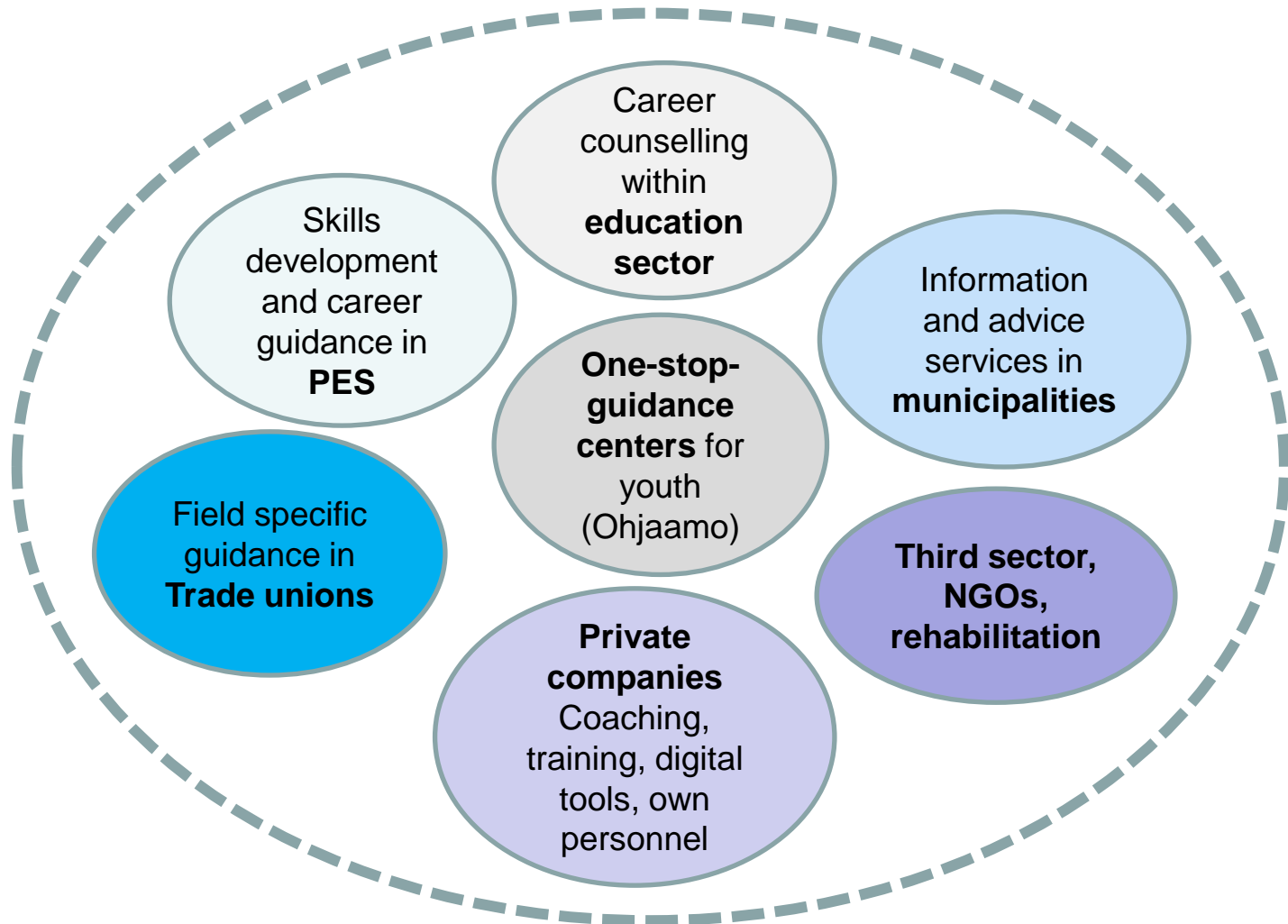


Ministry of Economic Affairs
and Employment of Finland

Guidance as a transversal element



Case Finland: The national lifelong guidance working group and networks for guidance and counselling



EU level strategic cooperation in lifelong guidance practice and policy development in Finland

- Finland has a long tradition in career guidance both in employment and education sectors – thematic working groups
- Important cooperation: European Lifelong Guidance Policy Network (ELGPN 2007-2015); guidelines, publications and 2008 Council resolution
- The main impact has been in the co-operation between the different sectors and in the establishment of the national sustainable working groups and a cross-ministerial lifelong guidance strategy
- EU Commission and OECD evaluate and produce recommendations on youth and adult education, and guidance services. Important background information for policy makers.



National lifelong guidance working group

- Co-chaired by the Ministry of Education and Culture & Ministry of Employment and Economic Affairs
- Representatives of Ministries of Finance, Social & Health, educational institutions, regional & local PES, universities, social partners, third sector and students
- Annual strategic national targets, meetings, news publication, etc., targets for regional working groups, monitoring the national outcomes



National strategy for lifelong guidance services in Finland 2015-20

- Services will be equally accessible for all and they meet the individual needs
- Individual career management skills will be strengthened
- Those who work in the field of guidance will have the required knowledge, skills and competences
- A quality assurance system for guidance will be developed
- The guidance system will function as a coherent and holistic entity



Regional lifelong guidance cooperation groups

- The implementation and development tasks of the central government is designated to 15 regional Centres for Economic Development, Transport and the Environment (**ELY-centres**)
- Each ELY-centre is obliged to establish a **regional lifelong guidance working group** with representatives from education institutions, PES, regional administration, social partners, municipalities, one-stop-guidance centers etc.
- Annual strategic targets, meetings, study visits, in-service training for guidance practitioners
- For example to enhance and support the operating model of One-stop-guidance centers (Ohjaamo Centers)



Interface between national and regional representative structures

- Regional forums are represented in the national working group
- Annual meetings with the chairs of the regional working groups
- Online joint platform for the national and regional working groups
- National webinars in co-operation with the national and regional working groups
 - Inputs from the ministries and stakeholders
- Follow-up of the progress of the regional forums



National forum
 Meetings of regional forums
 Regional forums
 Research on regional activities
 Proposals for new initiatives

Four annual newsletters

ELO-tori

ELO-tori

Tervetuloa ELO-torille!

ELO-torin tarkoituksena on elinikäisen ohjauksen yhteiskehittäminen yhdessä alueellisten toimijoiden kanssa. ELO-torille kootaan tietoa ja aineistoja valtakunnallisesta ELO-ryhmästä, alueellisista ELO-ryhmistä ja niiden kehittämisryhmistä, alueilla järjestettävistä koulutuksista, TNO-foorumeista sekä aluetutkimuksesta. Tämän lisäksi ELO-torilta löytyy oma kaikille yhteinen keskustelualue.

Huomaathan, että osa sivuista vaatii [sisäänkirjautumisen](#).

Kaikille avoimet sivut ovat Valtakunnallinen ELO, TNO-foorumit, alueelliset ELO-ryhmien sivut ja koulutuskalenteri.

Voit navigoida sivuille käyttämällä vasemmassa reunassa olevaa navigointipalkkia tai sitten alla olevia linkkejä.

- [Valtakunnallinen ELO](#)
- [Kehittämisryhmät \(vaatii sisäänkirjautumisen\)](#)
- [TNO-foorumit](#)
- [Alueelliset ELO-ryhmät](#)
- [Koulutukset](#)
- [Aluetutkimus \(vaatii sisäänkirjautumisen\)](#)
- [Tee esitys täydennuskoulutuksen teemaksi](#)

Tiedotteet

Ajankohtaista elinikäisestä ohjauksesta nro 11, toukokuu 2019

Tässä ajankohtaistarkastuksessa tarkastellaan jatkuvaa oppimista ja ohjausta sekä valmistatutumista tulevaan EU-puheenjohtajakauteen. Lisäksi esitellään kokemuksia liikkuvuudesta. Teemoina ovat lisäksi vaihtoehtoiset väylät korkeakouluopintoihin, re...
[0 kommenttia](#)

Ajankohtaista elinikäisestä ohjauksesta nro 10, helmikuu 2019

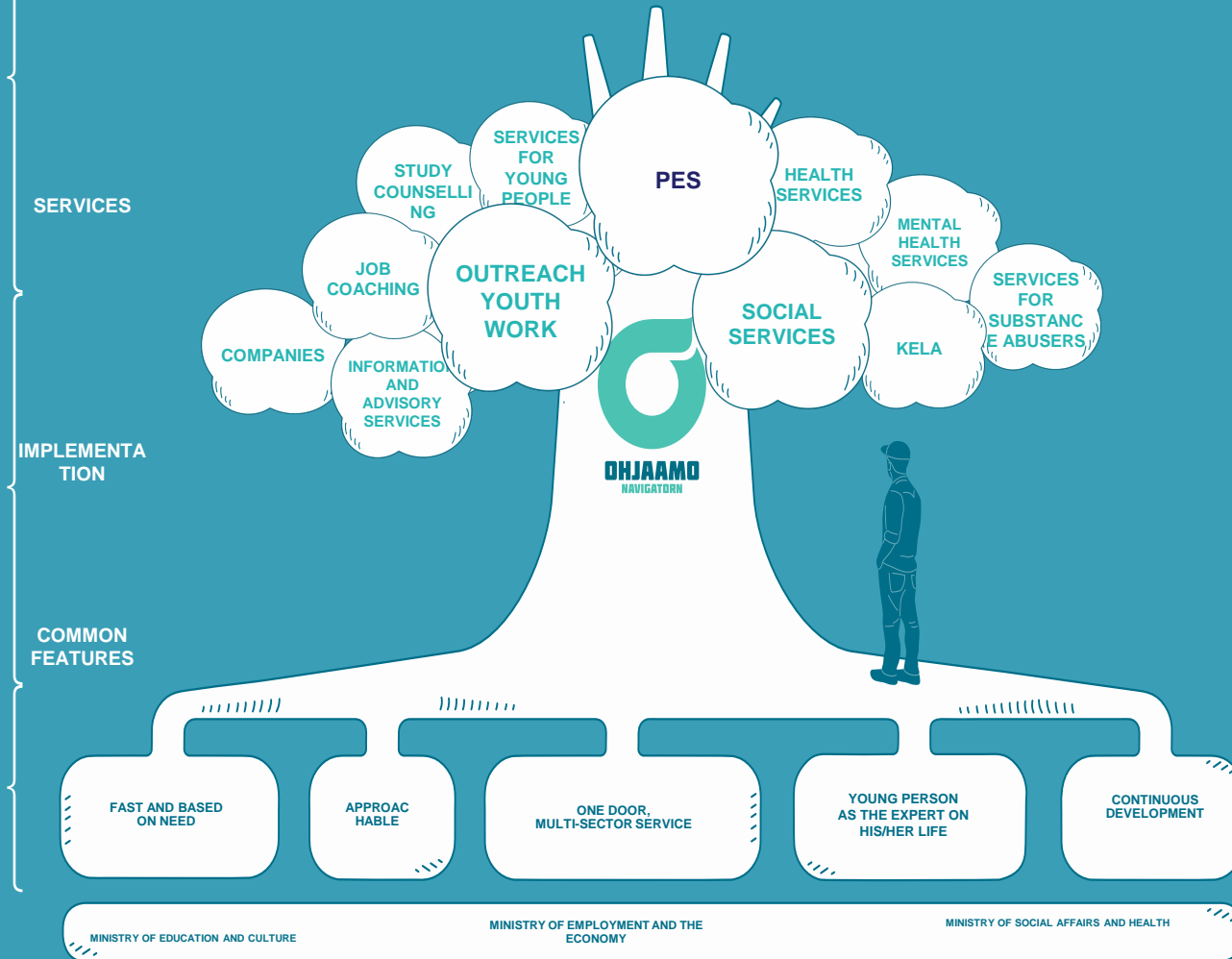
Tässä ajankohtaistarkastuksessa tarkastellaan asioita, jotka mahdollisesti ovat esillä kevään 2019 vaalikeskusteluissa.

Common platform for the national and regional representative structures

<https://peda.net/hankkeet/elotori>



THE ONE-STOP GUIDANCE CENTRE
Information, advice and guidance services for young people aged 15–29



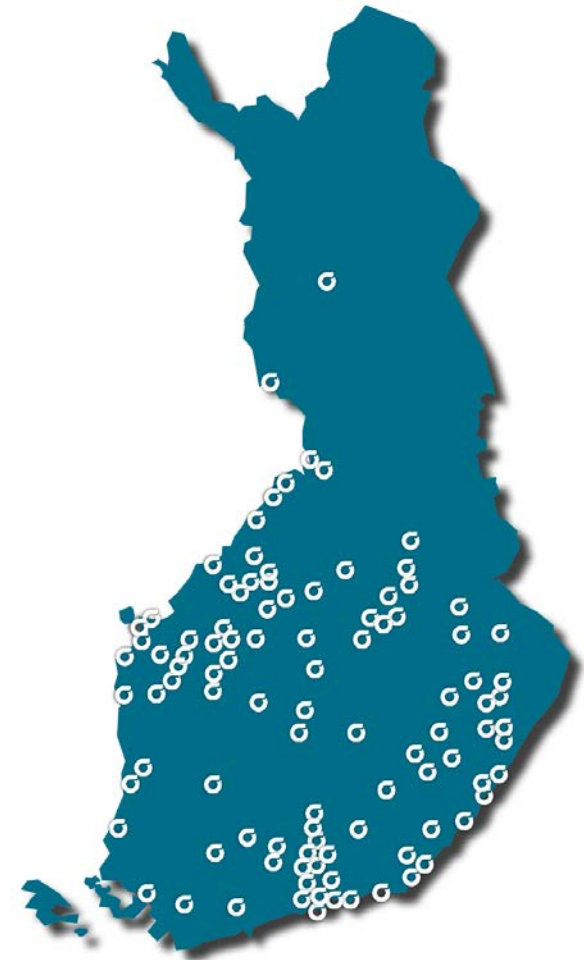
One-stop-shop guidance centres – Ohjaamo centres

- Shared understanding regarding the challenges and common interest among three ministries
- Taking into account the priorities of the Youth Guarantee Initiative
- Integration to national ESF programme with the idea of making it a permanent practice
- Consultation with the representatives of potential user groups
- Consultation among potential service providers – analysis of existing practices
- Establishing a co-ordination unit for pilots
- Establishing pilots
- Follow-up the pilots
- Allocation for national resources to promote sustainable structures
 - As long-term goal a similar operation model for all age groups



Guidance Centers in the beginning of 2019

- There exists over 70 One-Stop Guidance Centres
- Operations are developed in about one hundred municipalities
- Across Finland, young people used the services more than 142 000 times in 2018
 - More than half of them were men
 - Mostly 18-24 yrs.
- The operating procedures and models, as well as the forms of collaboration, vary. Loose boundary conditions have been established for the operation which gives it a lot of freedom
- Other factors that have an impact of the operation are geographic location and the conditions of municipality



New Government Programme 2019-23: Inclusive and competent Finland – a socially, economically and ecologically sustainable society

- The new government values education, continues learning and research very highly
- Targets, The government will
 - draw up a roadmap for skills and learning in 2030, outlining the shared long-term measures to increase the level of education and competence in Finland
 - implement a parliamentary reform of continuous learning as a response to the people’s lifelong need for upskilling and reskilling
 - **create comprehensive services for lifelong guidance**
 - In order to ensure equal opportunities for continuous learning, and to enable a strategic approach to guidance, both from the perspective of individuals and from the viewpoint of the society.
 - Guidance will also help those groups currently underrepresented in adult education to participate in continuous learning. This highlights the importance of retraining groups of citizens with low engagement in adult education.





Ministry of
Education
and Culture



Ministry of Economic Affairs
and Employment of Finland

Questions for further consideration:

- Joint framework for the use of ICT in guidance?
- Mandate for national co-ordination of the services?
- Joint framework for the training of practitioners across sectors?
 - Common quality criteria and feedback mechanism?



Siiloista

From silos



silloiksi!

to bridges!



Thank you!

For further information, please contact:

Raimo Vuorinen, Project Manager
Finnish Institute for Educational Research
P.O. Box 35
FI-40014 University of Jyväskylä
tel. +358-50-3611909
email: raimo.vuorinen@jyu.fi
Skype: vuorai

