



National Centre for TVET Development –  
ReferNet Romania

**ReCONNECT**

National Employment Agency:  
[Poster Reconnect \(anofm.ro\)](http://anofm.ro)

# ReCONNECT



# ReCONNECT

- **Romania: ReCONNECT project is developing mechanisms for anticipating and monitoring the labour market needs, and evaluating vocational education and training policies**
- **WHO: National Employment Agency together with its partners:**
  - Ministry of Labour and Social Protection,
  - National Institute for Scientific Research in Labour and Social Protection,
  - Ministry of Education:
    - Executive Unit for the Financing of Higher Education, Research, Development and Innovation,
    - National Centre for TVET Development (NCTVETD).

# ReCONNECT

**Romania: ReCONNECT project is developing mechanisms for anticipating and monitoring the labour market needs, and evaluating vocational education and training policies**

- **WHY / PURPOSE:**

ReCONNECT - a three-level approach in order to reach a coherent correlation of VET system data and related policies

**O1.** Increasing the capacity for strategic planning and adaption of VET supply in relation to the labor market needs by developing skill needs anticipation and graduate tracking mechanisms

**O2.** Increasing the capacity to develop policies on active employment measures and vocational education.

Three integrated mechanisms:

- **anticipate labour market needs,**
- **monitor LM insertion,**
- **evaluating VET policies**

# ReCONNECT

## Contribution of NCTVETD

**M1. Forecasting mechanism of labour market needs (competences, qualifications): short-, medium- and long-term.**

**M2. Mechanism for monitoring VET and university graduate transition to employment.**

### Specific methodology developed by NCTVETD

- NCTVETD internal / support platform
- Survey-based approach: specific target questionnaires
- Analysis / processing existing data-base
- Face-to-face interviews
- Local / regional / national experts

# ReCONNECT

## Quantitative and qualitative data

Survey – based Target-oriented questionnaires	Data base
- 3 year programme IVET students (EQF3)	- data base of IVET students
- 4 year programme IVET students IVET students enrolled in evening classes - 4 year programme (EQF 4)	- data base of companies supporting IVET students practical training (5693 companies)
- postsecondary ( nontertiary) students (EQF 5)	
- companies	

### Face - to - face interviews:

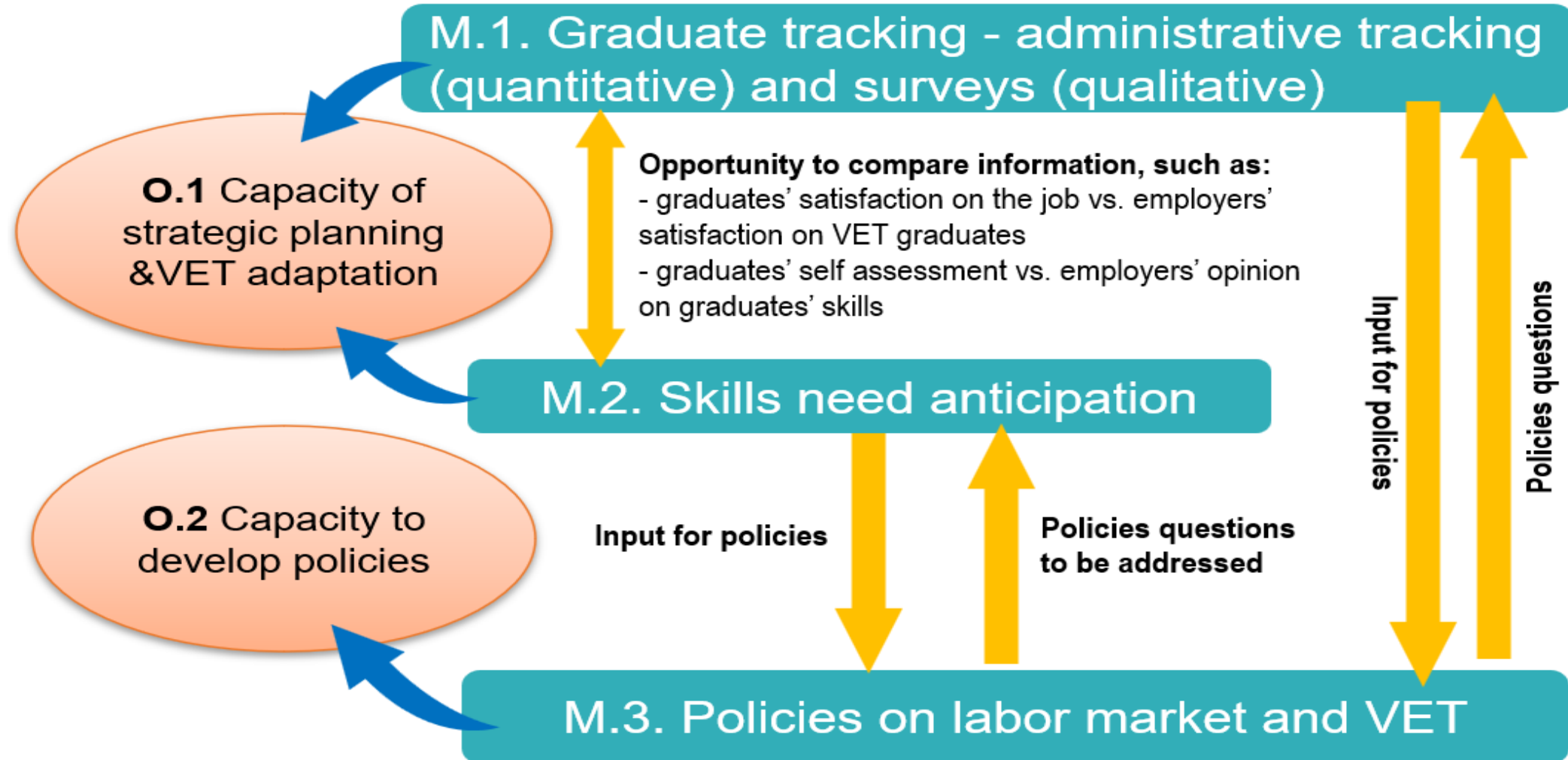
**1 384 IVET graduates & 673 companies**  
(out of 24 306 recent graduates) (out of 5693 companies)

# ReCONNECT

## M3. VET policy evaluation mechanism

- analysis of the status quo – quantitative and qualitative approach
- Methodology - 99 indicators:
  - 20 contextual and
  - 67 IVET-related,
  - 12 qualitative.
- the indicators were applied to the 2017-22 IVET learner data, including qualitative data from the Integrated Information System of Education in Romania from the Ministry of Education and the National Institute for Statistics.
- specific target questionnaires were developed on the evaluation of practical training and IVET programmes and applied to:
  - IVET students,
  - IVET teachers,
  - parents and
  - companies.
- The report includes synthetic data and evaluation of answers from 12 718 IVET students, 1 429 teachers, 2376 parents and 132 representatives of companies.

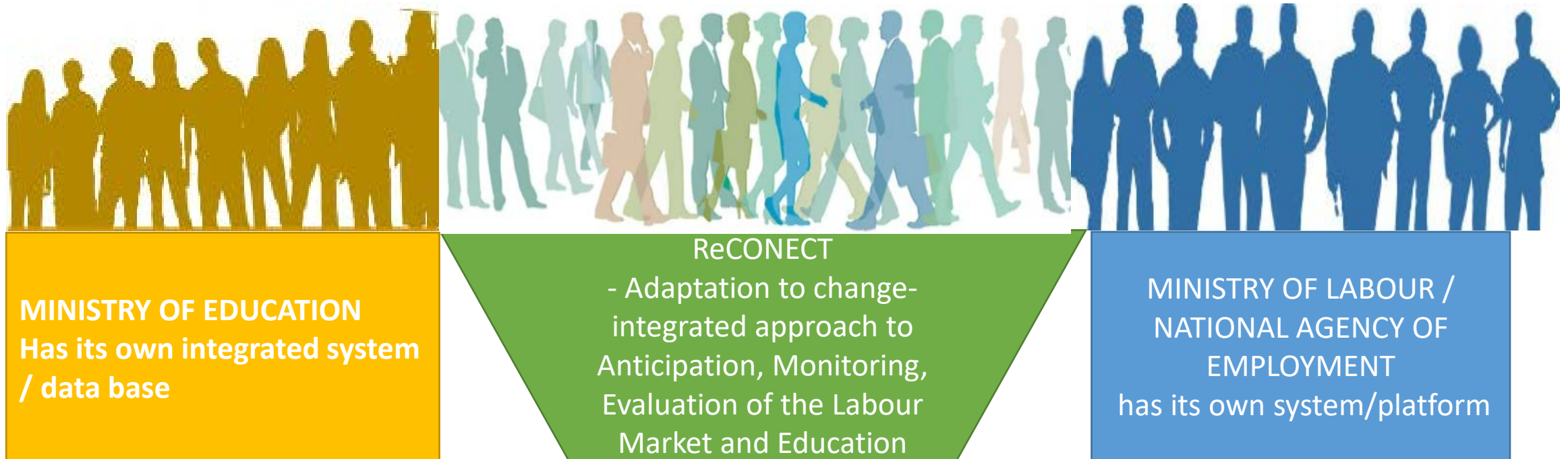
# Current developments - integrated mechanism



# ReCONNECT

## INTEGRATED MECHANISM

CURRENT DEVELOPMENT



# ReCONNECT

## INTEGRATED MECHANISM

CURRENT DEVELOPMENT



ReCONNECT

- Adaptation to change-  
integrated approach to  
Anticipation, Monitoring,  
Evaluation of the Labour  
Market and Education



INTERCONNECTED PLATFORM  
RELYING ON THE THREE  
MECHANISMS

# ReCONNECT

