



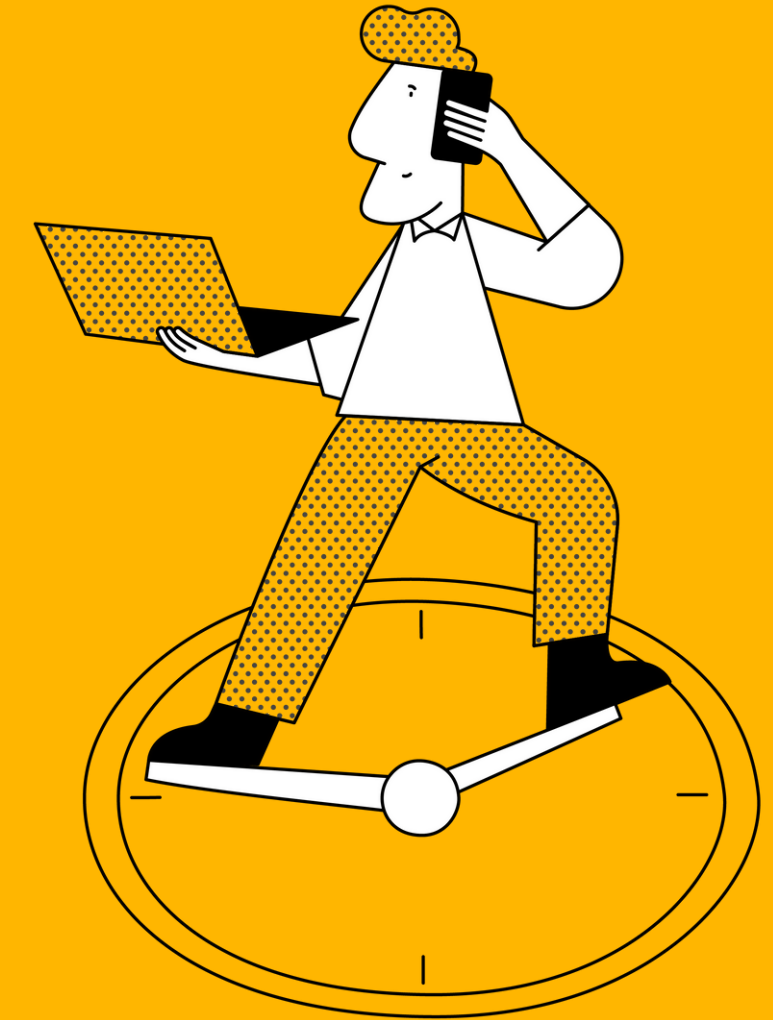
KURSUOK

KURSUOK

One-Stop-Shop for Adult Education

INDIVIDUAL LEARNING ACCOUNTS (ILA) SYSTEM

Cedefop conference 'Financing adult learning: The role of public funding'
20-21 October 2025, Thessaloniki



Funded by
the European Union
NextGenerationEU



NEW GENERATION
LITHUANIA



MINISTRY OF EDUCATION,
SCIENCE AND SPORT
OF THE REPUBLIC OF LITHUANIA

esfa EUROPEAN
SOCIAL
FUND
AGENCY

- Legal commitments and guidelines

UNTIL
2030

In the European Pillar of Social Rights Action Plan, Lithuania has committed to an annual participation rate of at least 53.7% of people aged 25-64 in learning activities.

Agreement on Lithuanian Education
Policy/ 2021-2023

Commitment to develop and implement the Lifelong Learning financial support system, which enables individuals to access and use learning support to acquire professional and general competences.

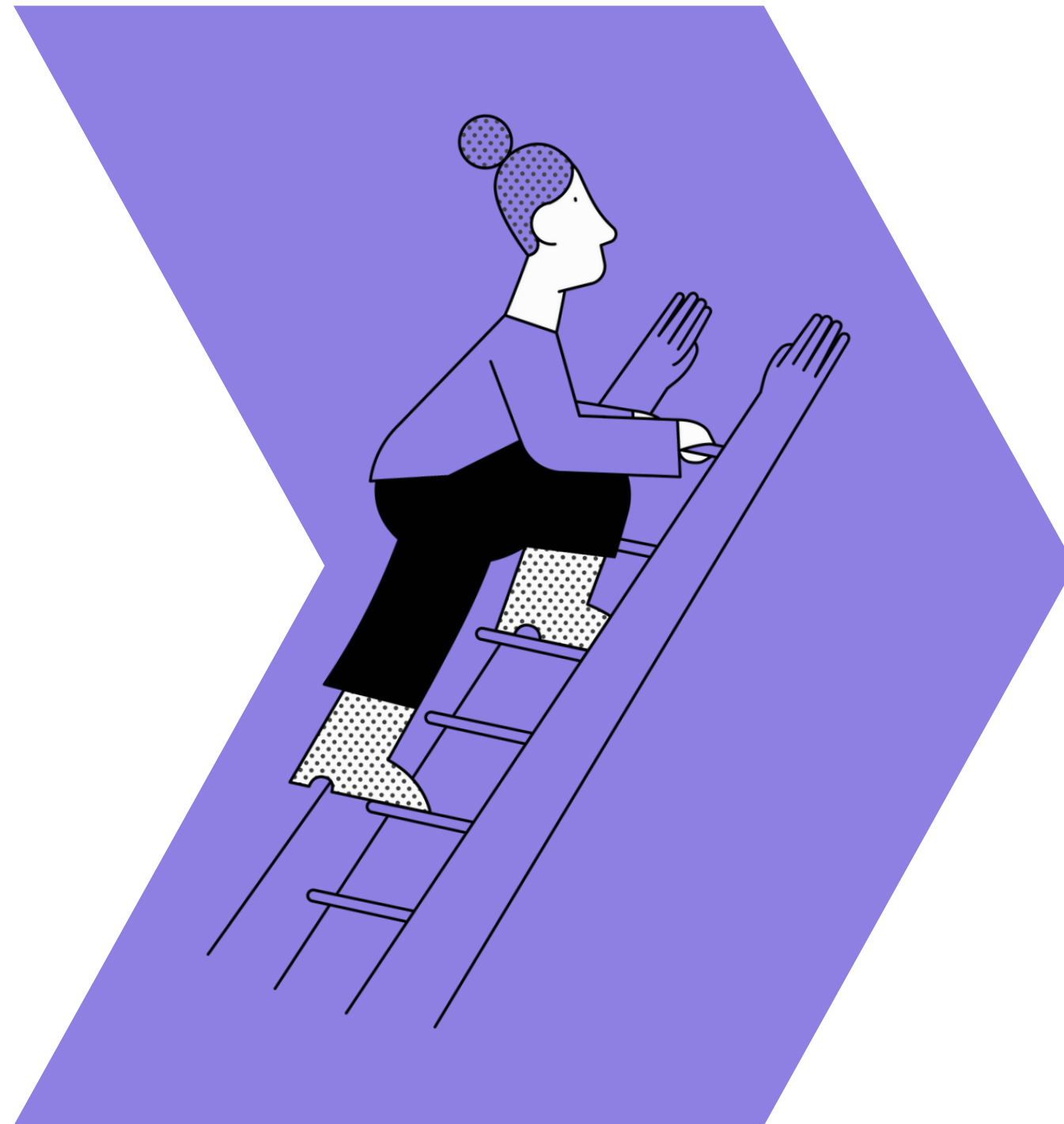
OECD Skills Strategy
for Lithuania/ 2021

Recommendation to raise awareness of the benefits and opportunities of adult learning by making information on the benefits, opportunities, and funding of adult learning available online through a one-stop shop web portal.

EU Council Recommendation on
Individual Learning Accounts/ 2022

Proposal for the introduction of common national digital portals where the state can support working-age adults to participate in learning activities.

What changes are implemented by the KURSUOK?



KURSUOK is the first national adult educational platform with a one-stop shop that connects adults who want to learn with training providers.

Quality assurance of adult education services - KURSUOK has established a quality assurance mechanism for adult education services, setting clear standards for both the programs and their delivery.

Ensuring a variety of flexible learning options - a consistent adult learning process is ensured through inter-ministerial coordination.

Connecting educational databases - links have been developed with education registers, combining information on an individual's formal and non-formal education, allowing for the analysis of the diversity of adult education providers and programmes.

.

Core components of ILA LTU

ILA is an ongoing reform implemented within the legal framework and lower-level regulations

Opened to providers in Q4 2023 and became fully operational in January 2024.

Priority criteria: Employed individuals with a VET or HE degree, aged 18–65.

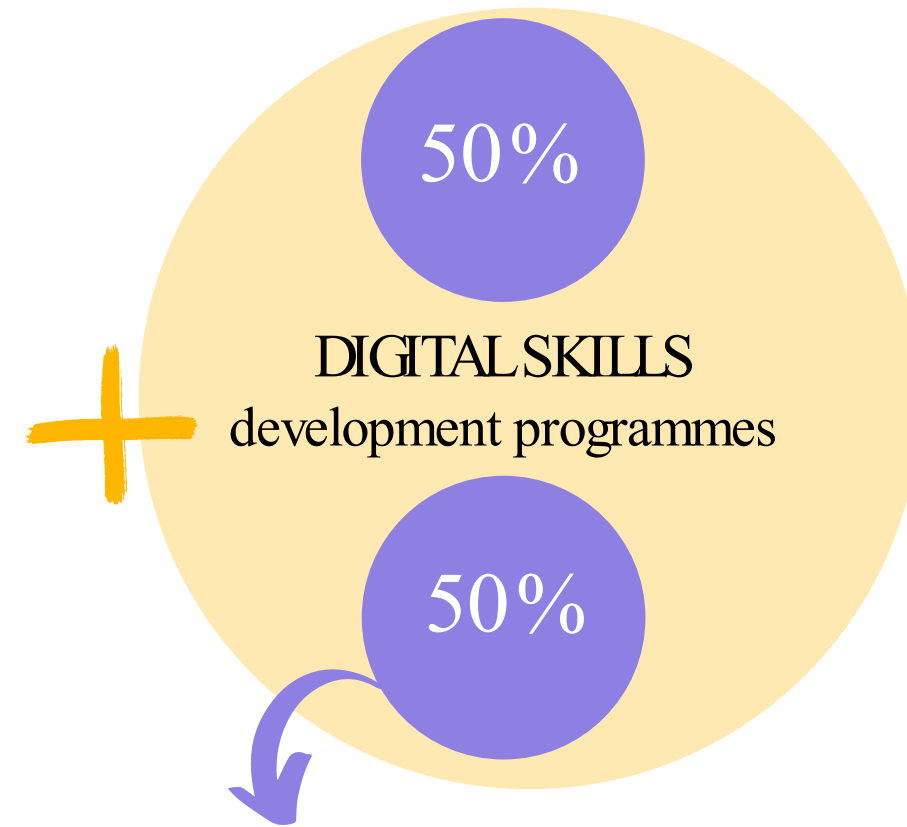
Programs focus on strengthening both general and professional competencies.

ILA Steering Group has been established for the governance of the ILA system.



Priorities and funding for KURSUOK

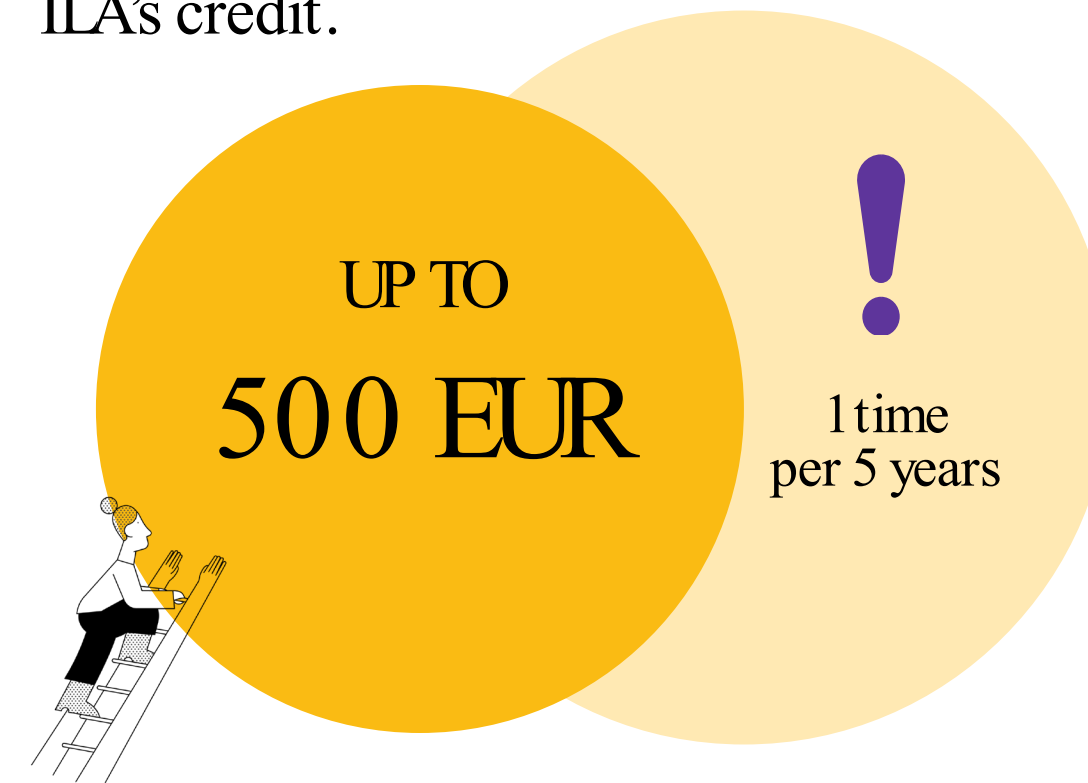
Areas of learning programmes and funding available in ILA system KURSUOK:



OTHER priority areas (overall):

- mathematics, science, technology, and engineering;
- multilingualism;
- entrepreneurship;
- literacy;
- cultural awareness and expression;
- active citizenship;
- personal, social, and learning- to- learn competencies.

Individuals can choose from a range of learning programmes relevant to them and benefit from the ILA's credit.

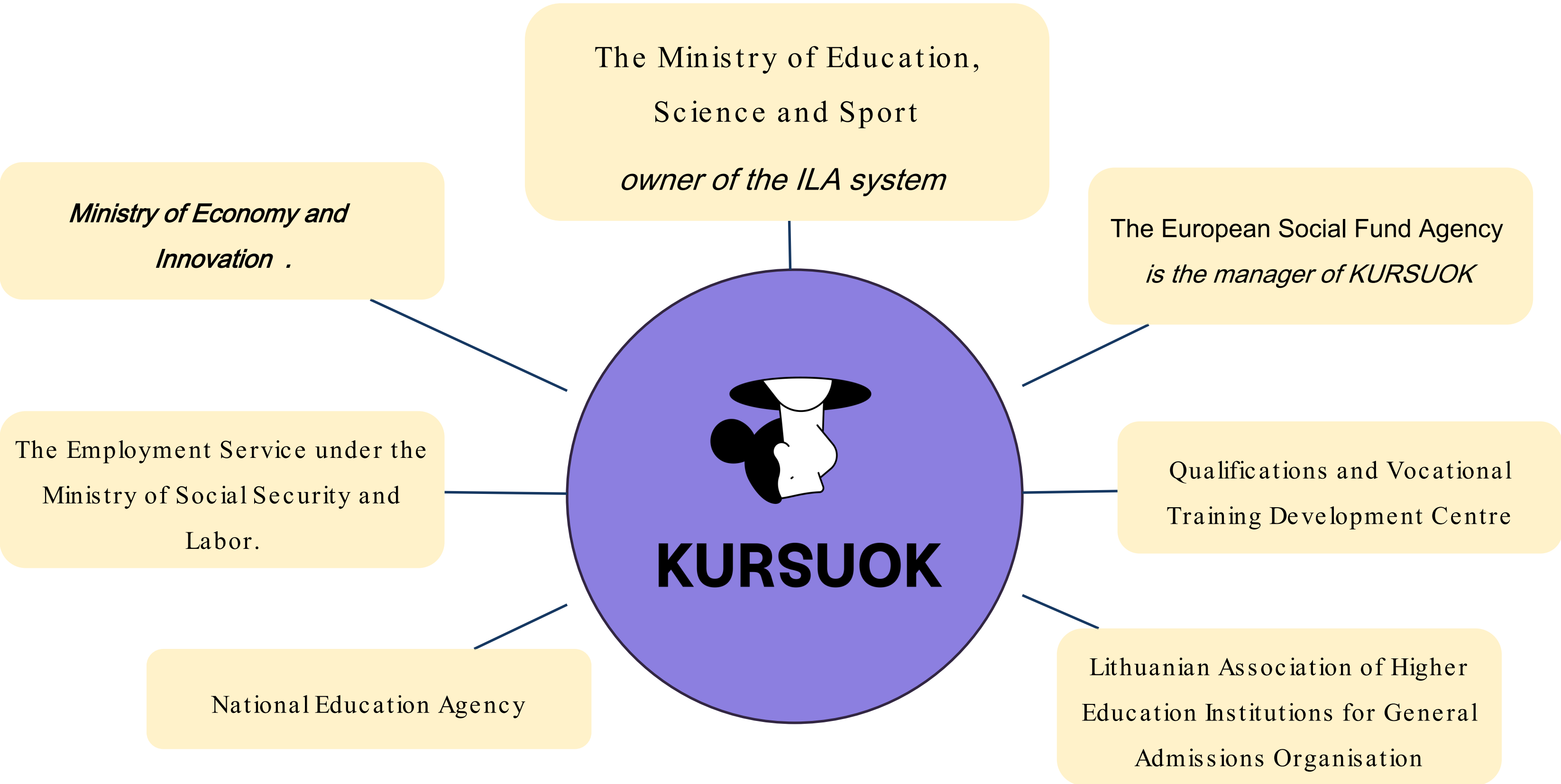


ILAc credit is open to individuals, who meet all the following criteria:

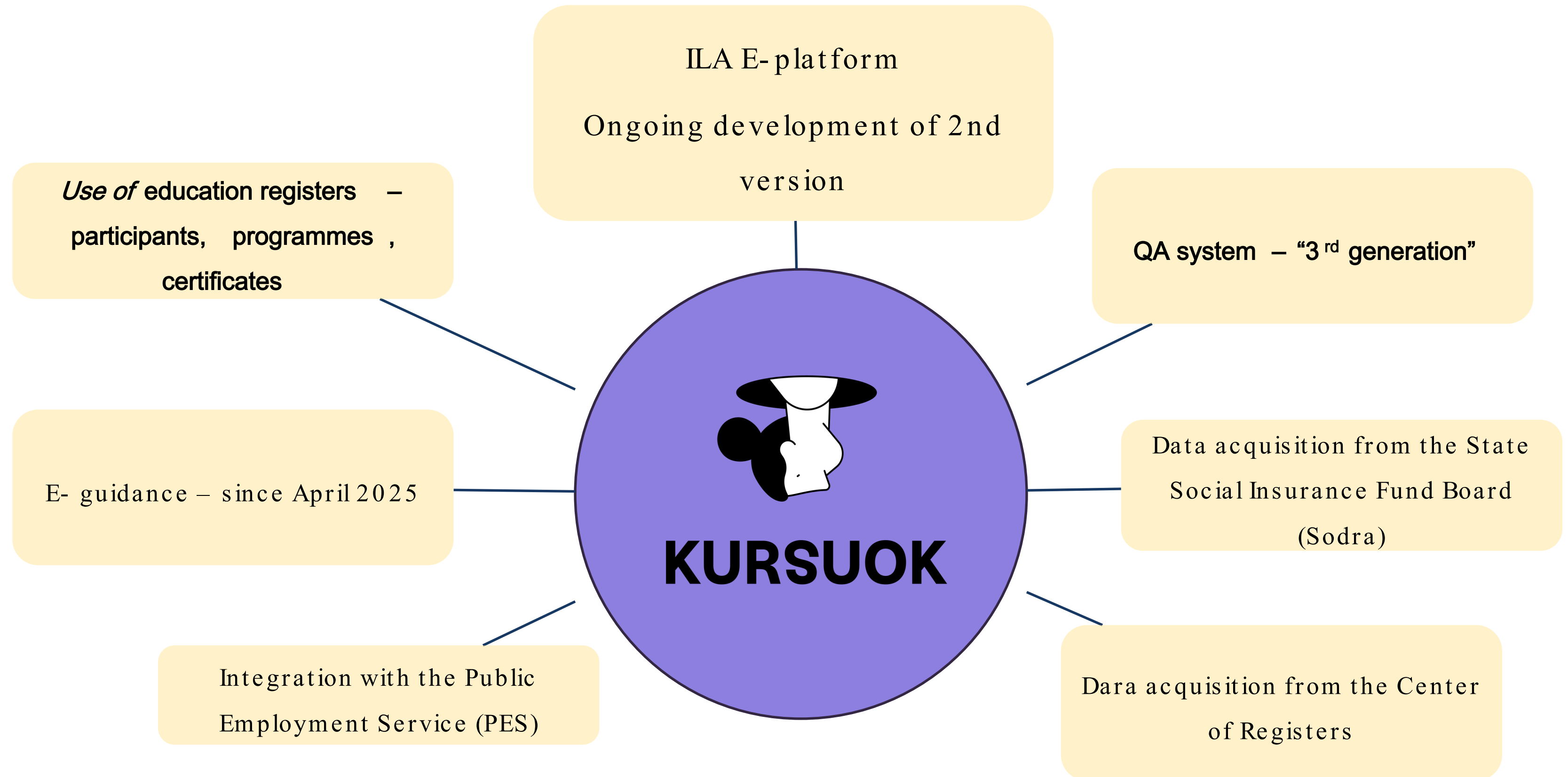


- 18- 65 age, Lithuanian citizens or holders of a residence permit in Lithuania;
- acquired a vocational education training (VET) qualification or a higher education (HE) degree
- employed* (*according to the Employment Law of the Republic of Lithuania).

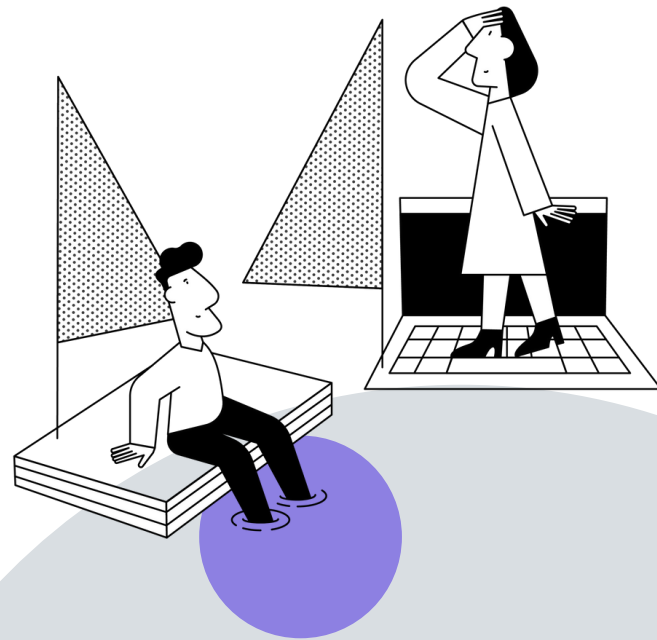
Institutions involved in the management of KURSUOK



Resources for the implementation of the ILA system



- Quality assurance of KURSUOK



The implementation of the learning programmes published on the KURSUOK platform is monitored by the Qualifications and Vocational Training Development Centre.

Evaluation of learning programmes:

- Accredited/licensed providers submit programmes without additional external evaluation (public vocational training institutions and higher education institutions);
- Other providers' programmes are evaluated by expert evaluation, assessing the relevance of content, clarity of aims and objectives, the relevance of learning methods to the intended outcomes, and experience of trainers.

Quality monitoring

- Planned and spot checks by assigned experts during the learning process.
- The monitoring checks the number of participants, the implementation of the program, the timetables, the learning content, and the compliance of the learning content and conditions with the content provided in the KURSUOK.

Evaluation by the participants

- After completing courses, participants evaluate the training in terms of its relevance to their expectations, the presentation of the topics, and its practical applicability to their professional lives.
- The evaluations are publicly visible to ensure transparency of the system.

Quality assurance of KURSUOK



A definitive list of violations has been established.

- If a program is found to have violations twice, it will be removed.
- If two programs from the same provider are removed, the provider will lose the right to operate within the KURSUOK system for one year



- Training providers path in KURSUOK



REGISTRATION OF THE PROGRAMME

- First of all, the training provider registers in the Register of Educational and Scientific Institutions (RESI).
- Then the training programmes are registered in the Register of Non - Formal Education Programmes (NRP).

EVALUATION AND PUBLICATION OF THE PROGRAMME

- The training programmes are submitted to the Qualifications and Vocational Training Development Centre (QVTD) specialists for qualitative evaluation.
- After a positive evaluation, the training programme is published on KURSUOK (provider account).

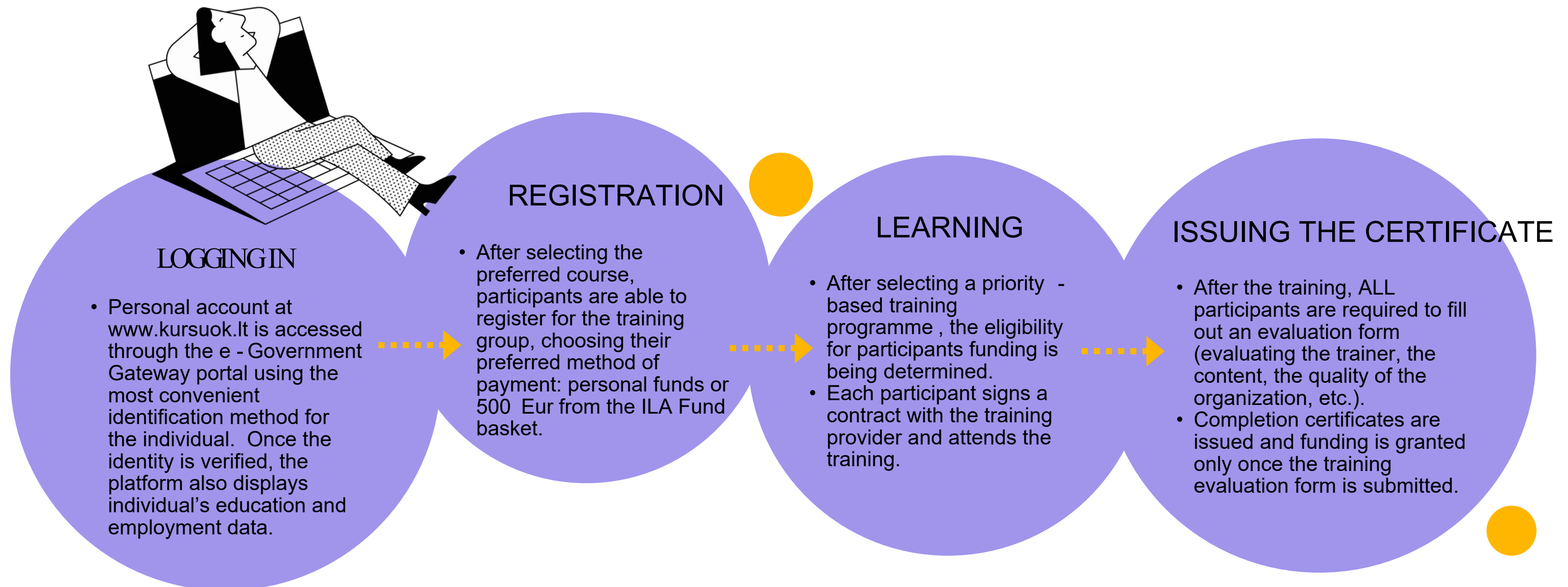
TRAINING IMPLEMENTATION

- To make the training programme visible to the participants, the training provider must enter the required information.
- Registration of participants, signing of contracts, delivery of training.

INVOICING

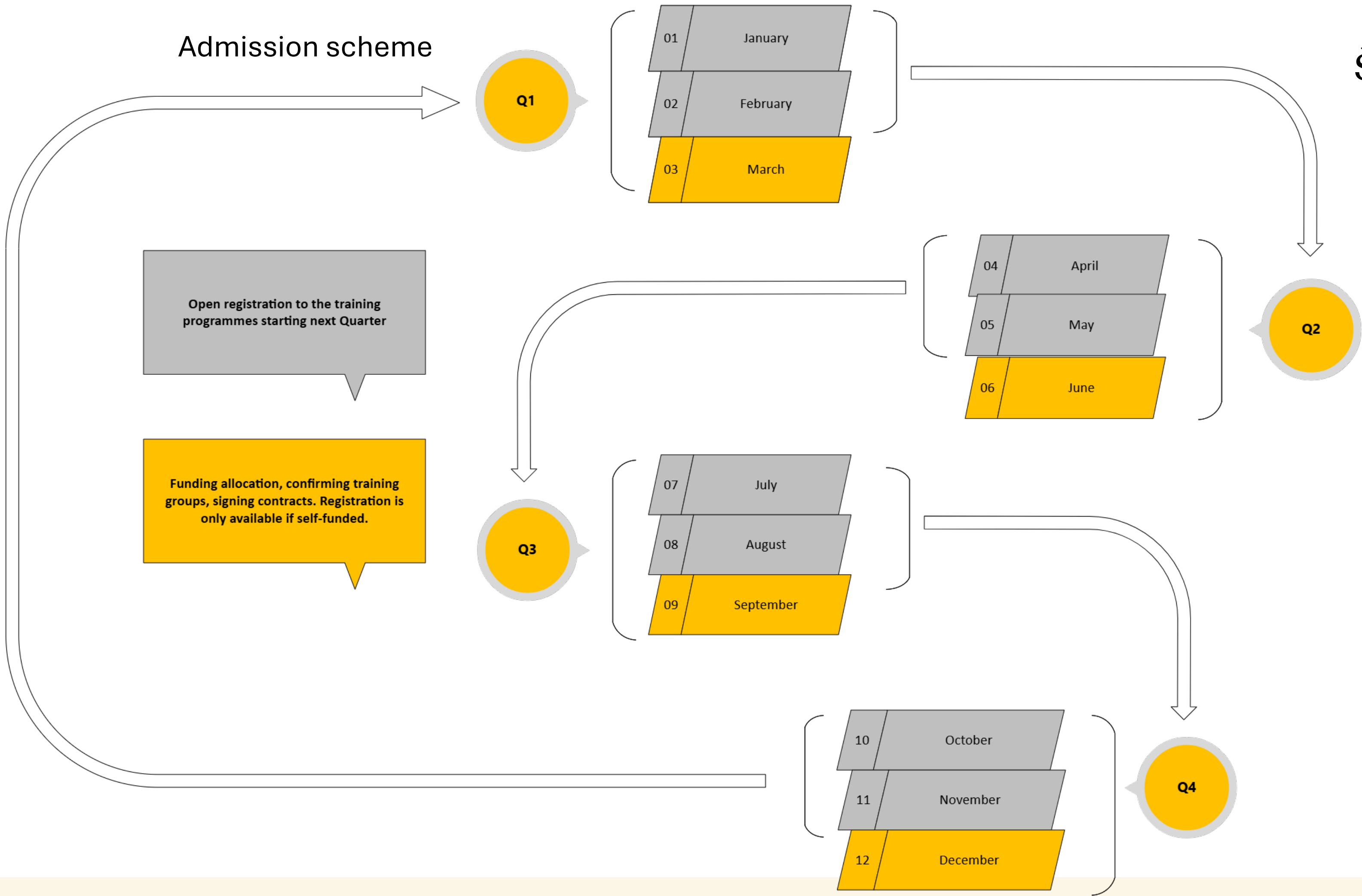
- Invoices are issued and paid:
- upon submission of evaluation forms by participants;
 - if invoices have been submitted according to the requirements.

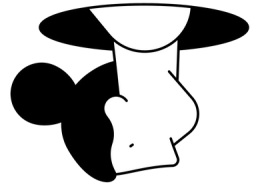
- Participants path in KURSUOK



Admission scheme

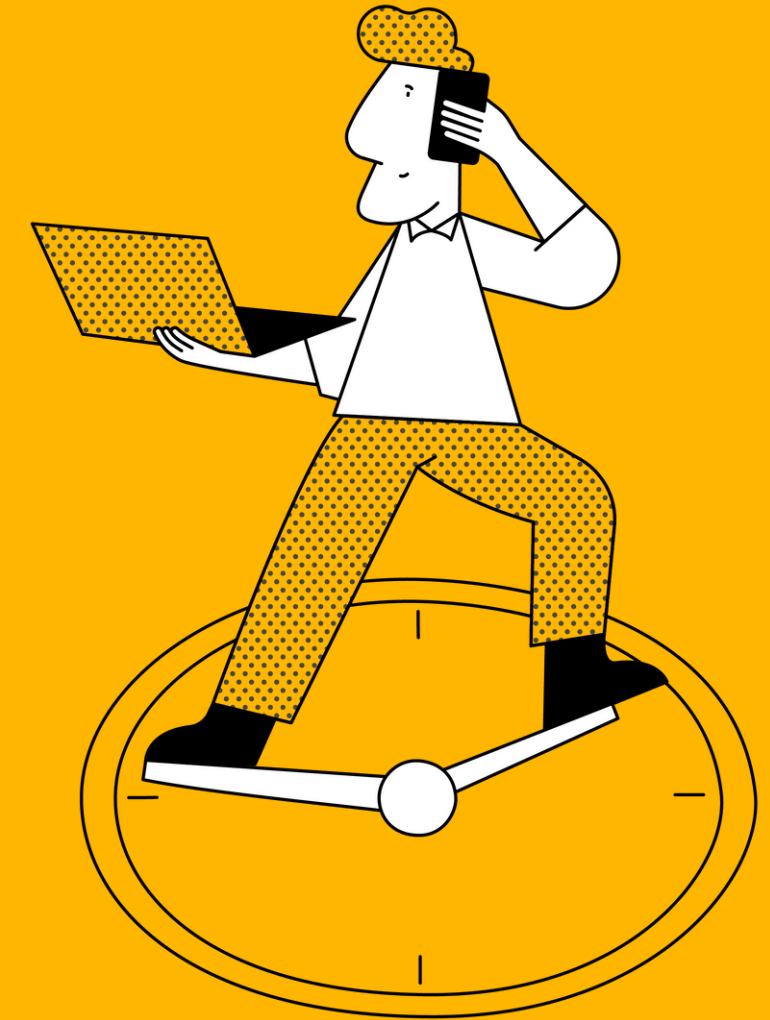
ŠMSM





KURSUOK

Key developments in
the system's first year
of operation



Key indicators

Registered users – more than 69 000,

Certificates issued – more than 14 000,

Total number of contracts signed – 17 400,

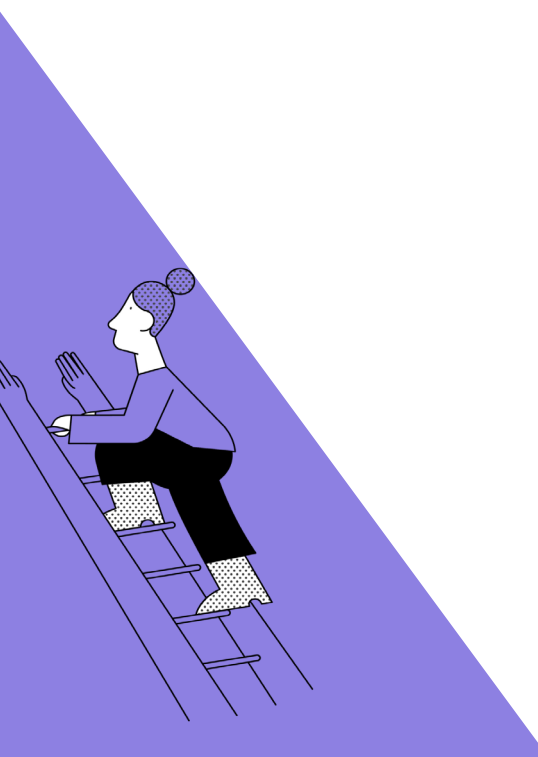
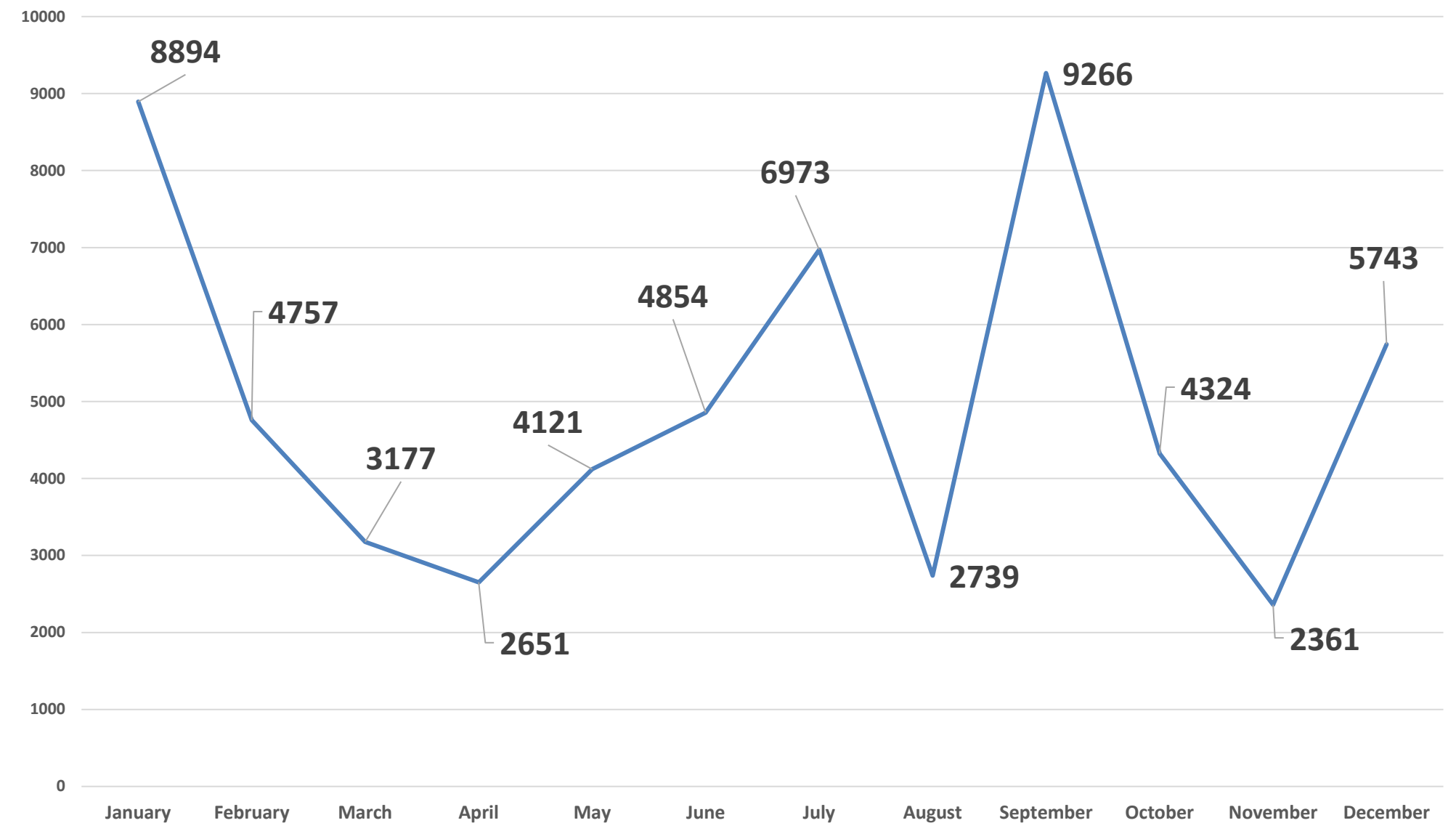
Training groups – ~1000 groups completed

Budget – €7.4 million (2024)

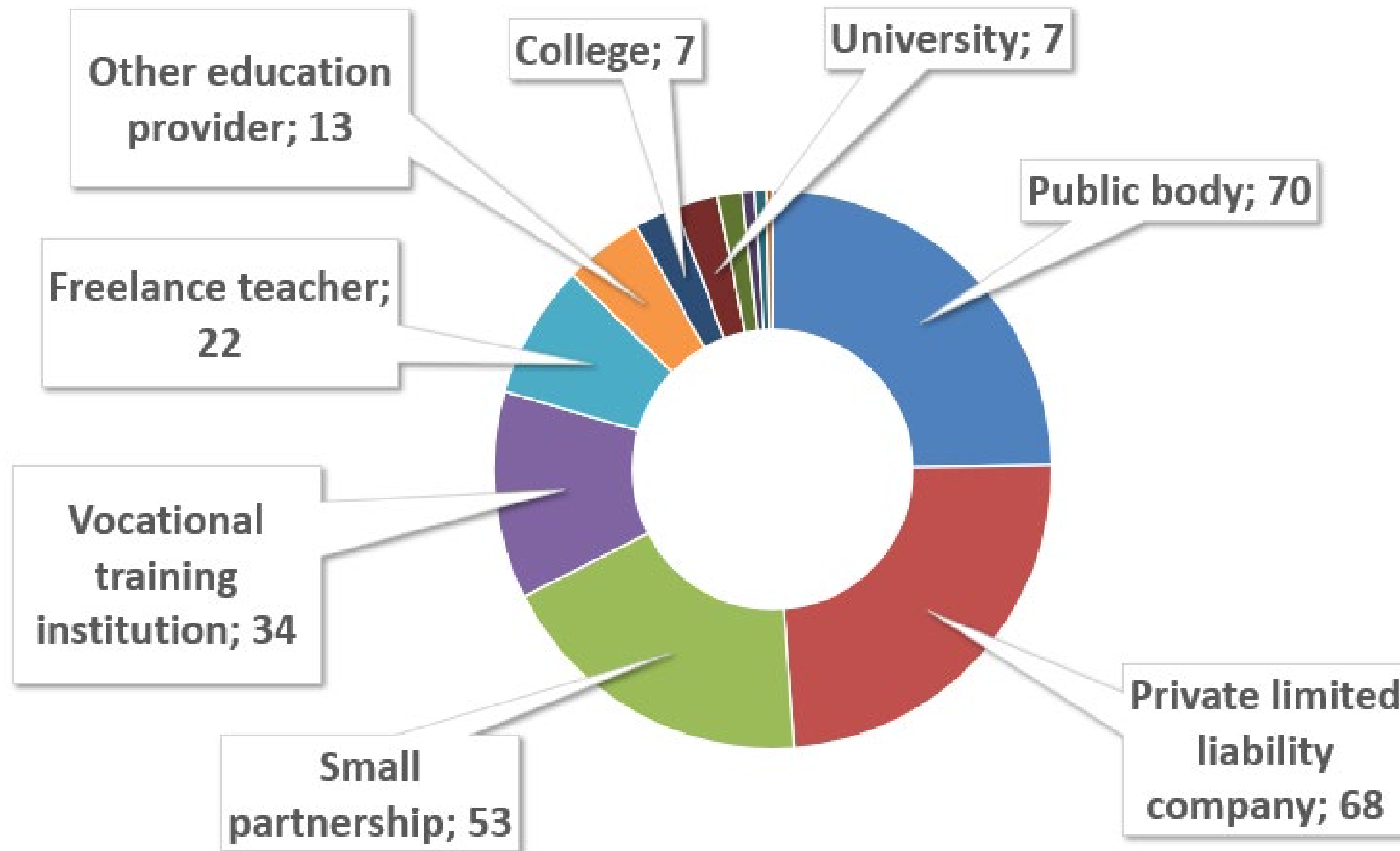


KURSUOK

NUMBER OF NEW USERS



Training providers



283

In total

Participant demographics



Participants by age:

30–39 y.o.: 35,14 %

40–49 y.o : 27,82 %

50–59 y.o : 17,13 %

Gender distribution: ~83.5 % women, / ~16.5 % men

Education Levels:

~82 % have higher education

~18 % have professional qualifications

By Citizenship:

~99.52 % Lithuanians

~0.48 % others

Geographical Distribution:

Most participants are in Vilnius, Kaunas, and Klaipėda

The lowest activity is in smaller districts.

Funding Sources Distribution:

~98.5% from **ILA Credit** / ~1.5% from personal funds



The most frequent KURSUOK trainees: women, aged 35-47, with higher education, living in one of Lithuania's major cities.

Key lessons from KURSUOK



1. RELIABILITY of TECHNICAL INFRASTRUCTURE

Ensure your technical platform can handle high user traffic during funding releases.

2. TRANSPARENT FUNDING MECHANISMS

Participants need a clear understanding of how and when funding is distributed.

3. INTEGRATED QUALITY ASSURANCE

Quality monitoring must be built into the program from the beginning.

4. TRAINING COST MANAGEMENT

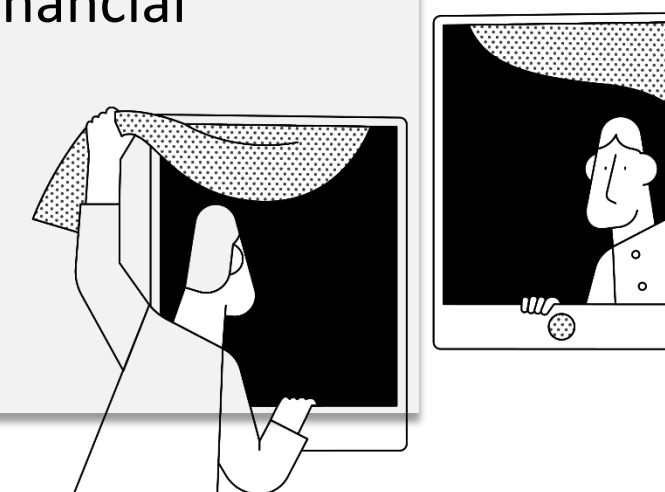
shorter programs and hourly rate setting

5. MANAGEMENT OF THE PARTICIPANT REGISTRATION SYSTEM

Establishing a clear prioritization mechanism for participants, considering limited financial resources.

6. ENHANCING PERSONAL RESPONSIBILITY

Implementing a co-financing model.



THANK
YOU!



KURSUOK

TOMAS PŪTYS

Head of Non-formal Education Division



Ministry of Education, Science and Sport
of the Republic of Lithuania

tomas.putys@smsm.lt

