



Rialtas na hÉireann
Government of Ireland

Lifelong Guidance from a National Perspective

Dr Carol Guildea

Guidance Specialist

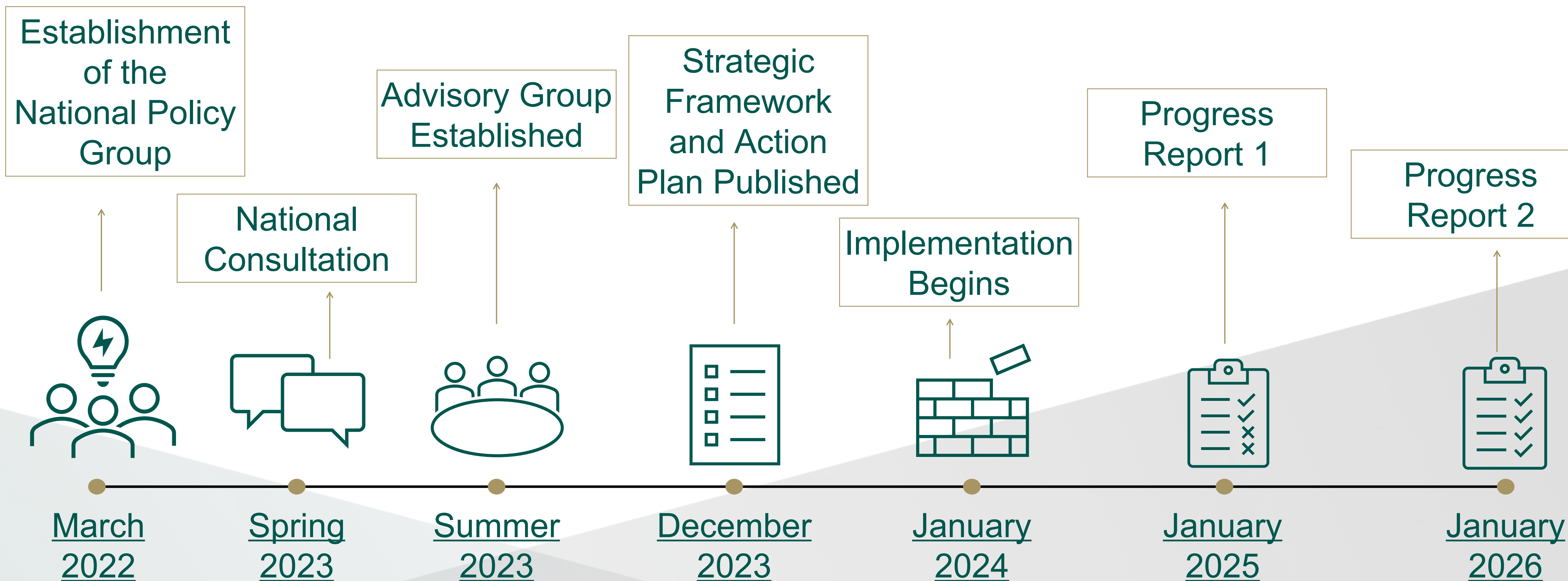
Department of Education and Youth



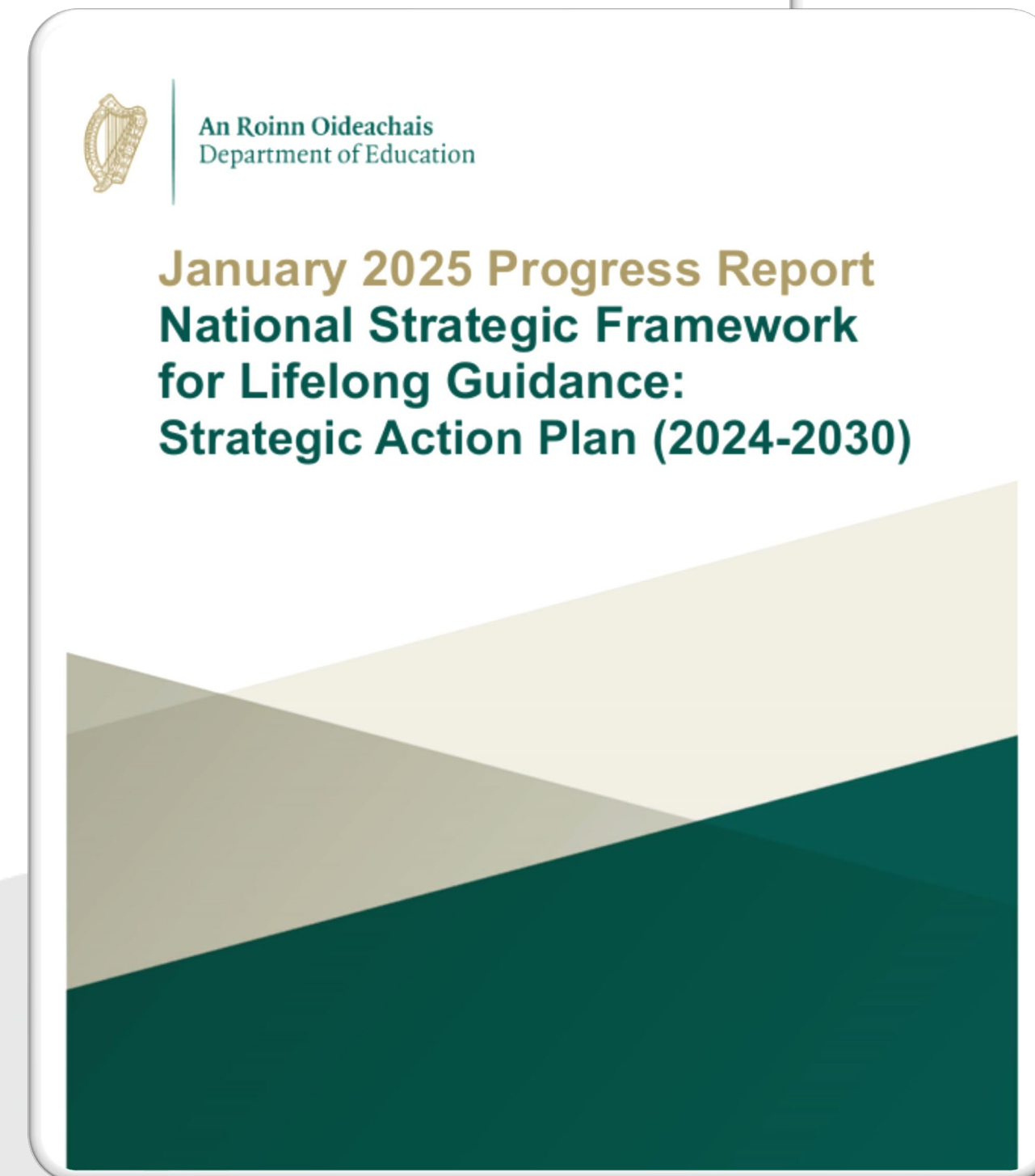
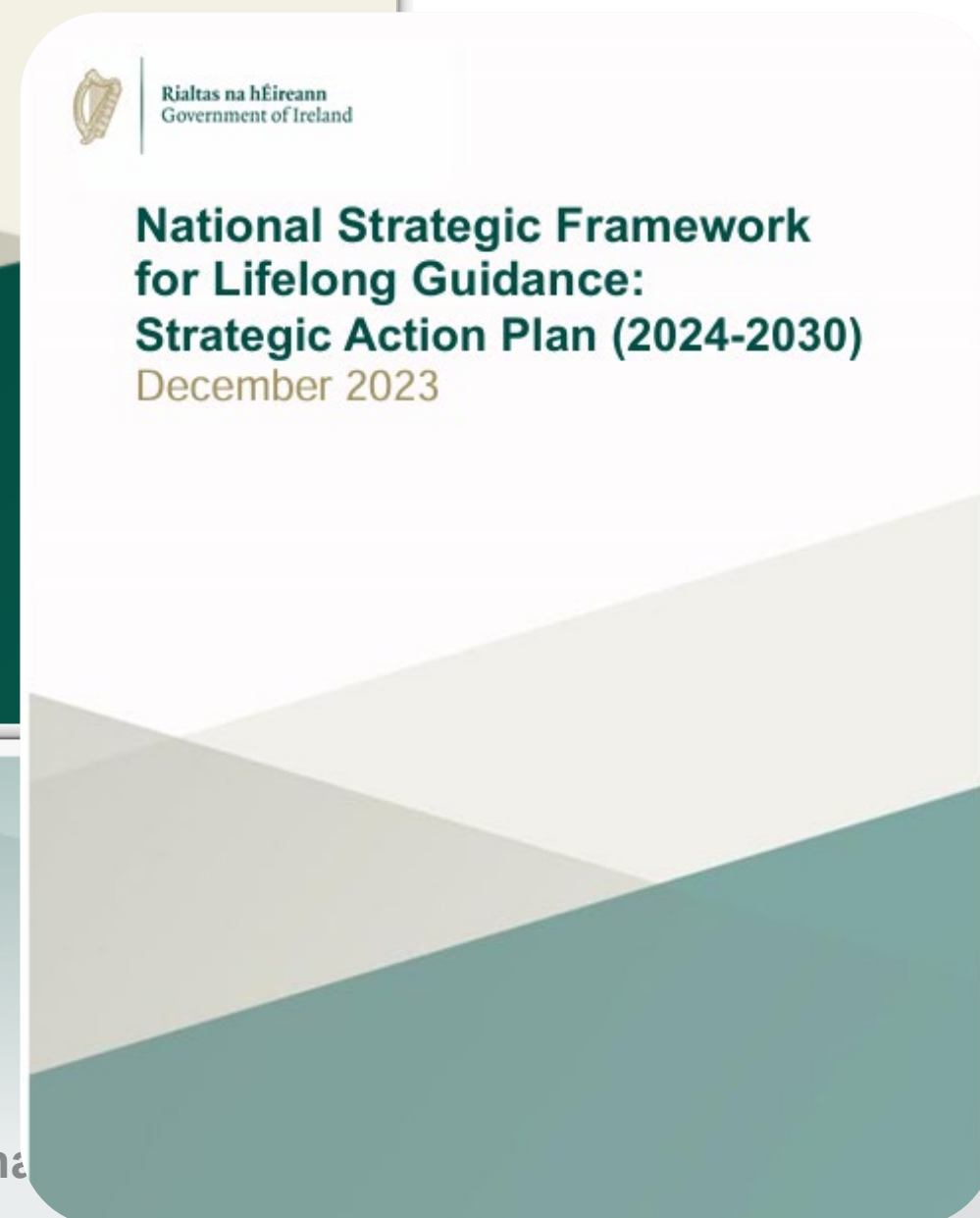
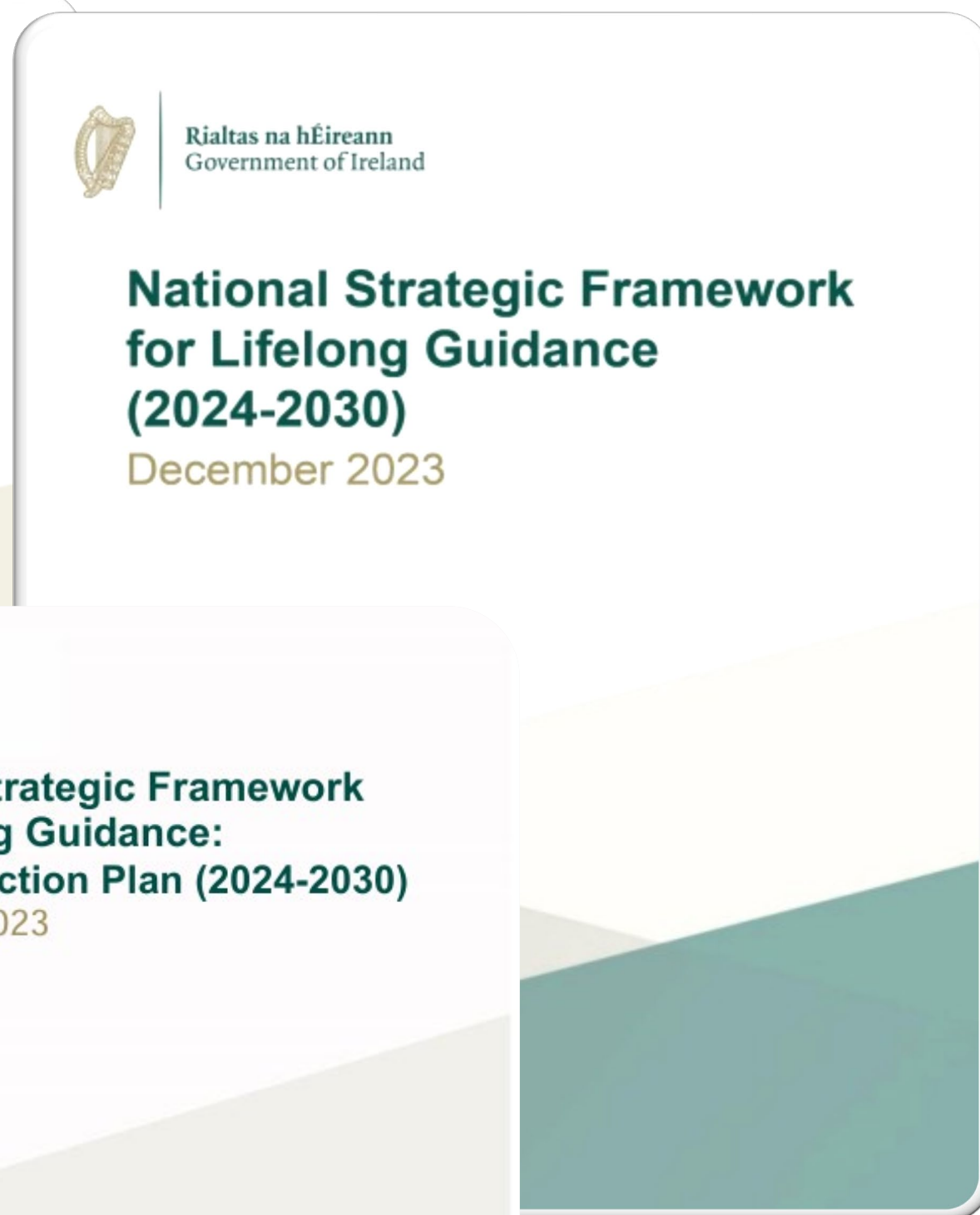
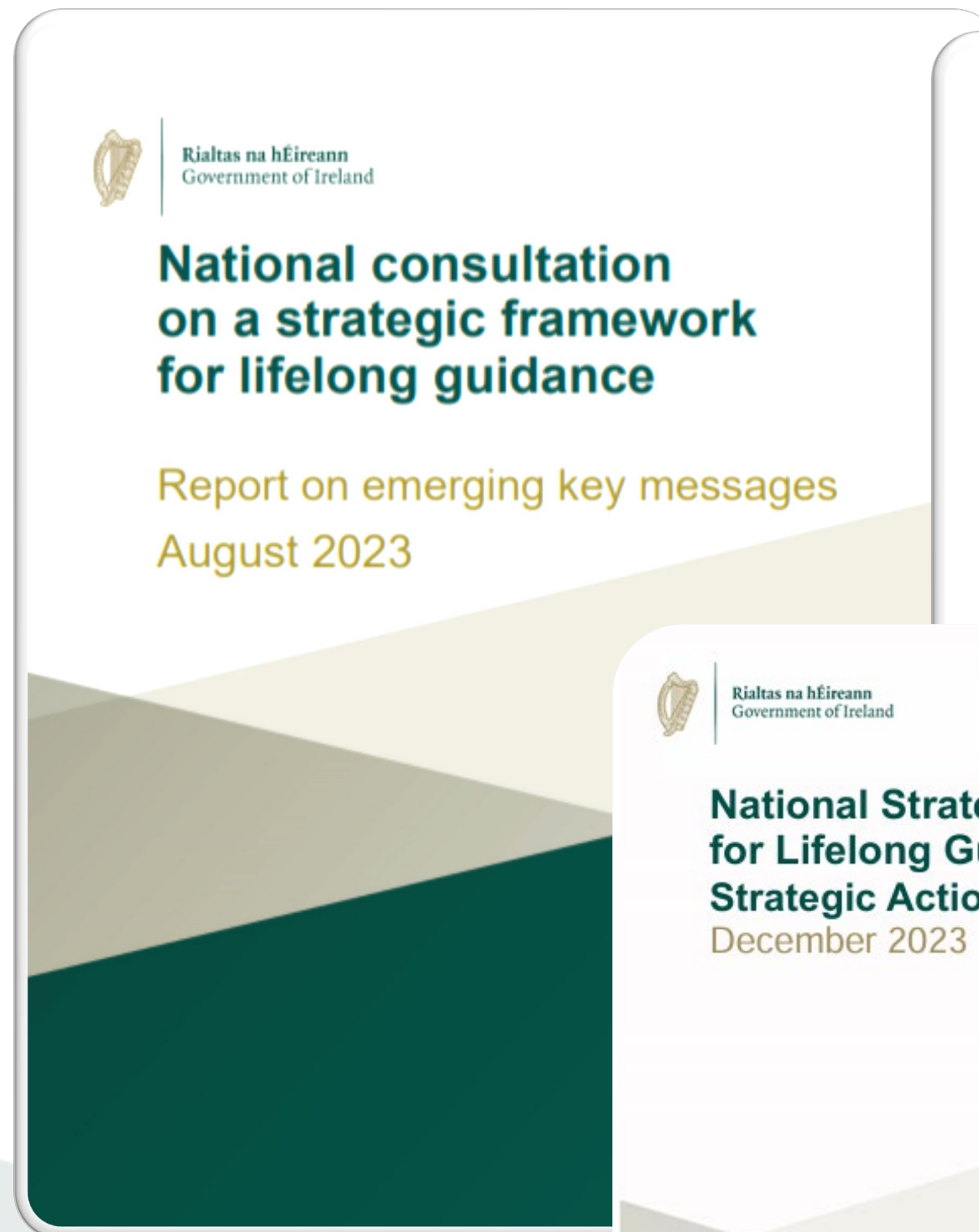
Rialtas na hÉireann
Government of Ireland

Lifelong Guidance in Ireland

Timeline of key dates




National Strategic Framework for Lifelong Guidance (2024-2030)



1. Consistent terminology

A key recommendation subsequent to a National Consultation on a Strategic Framework for Lifelong Guidance [\(GOI, 2023\)](#)

Careers Teacher 

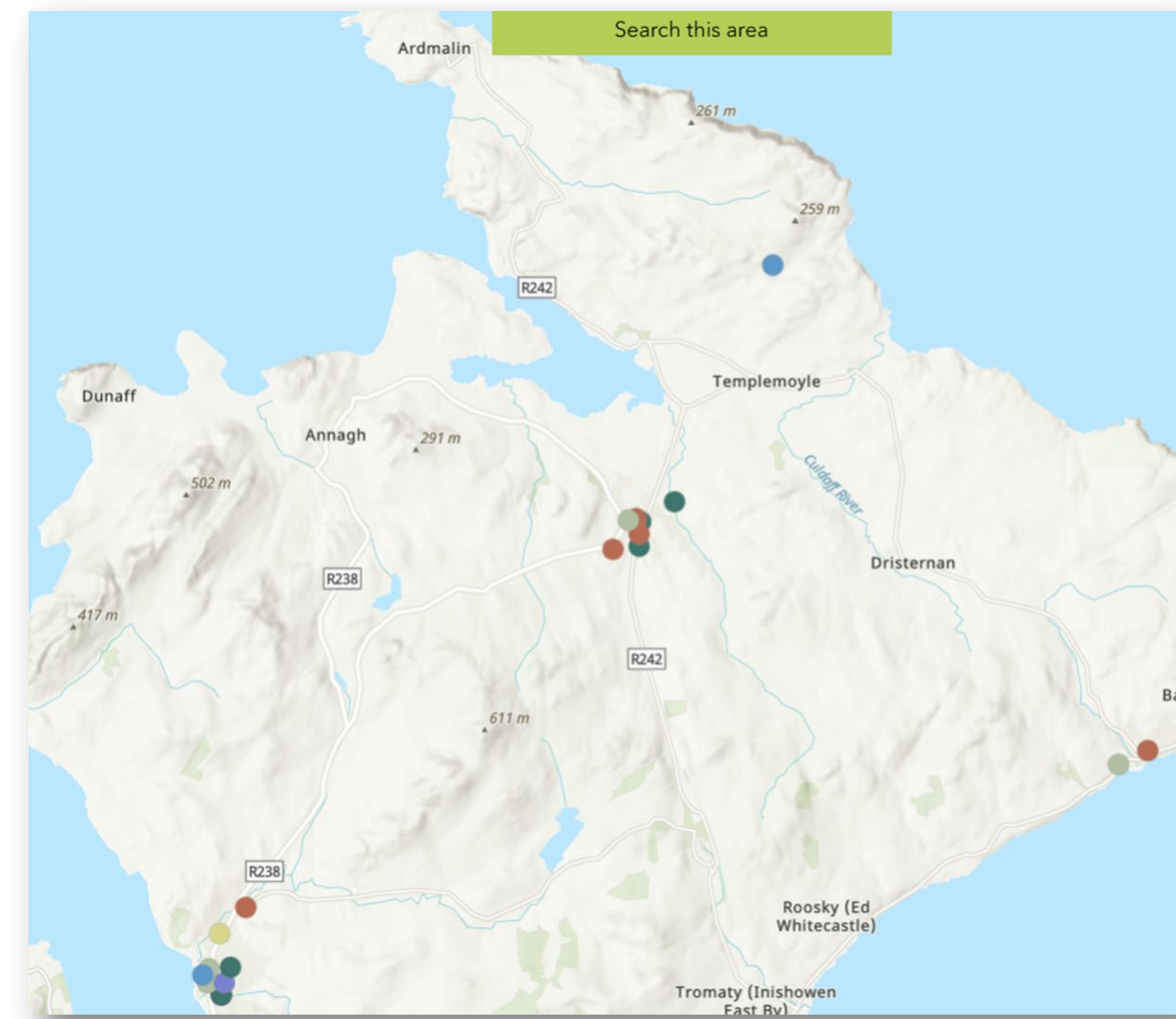
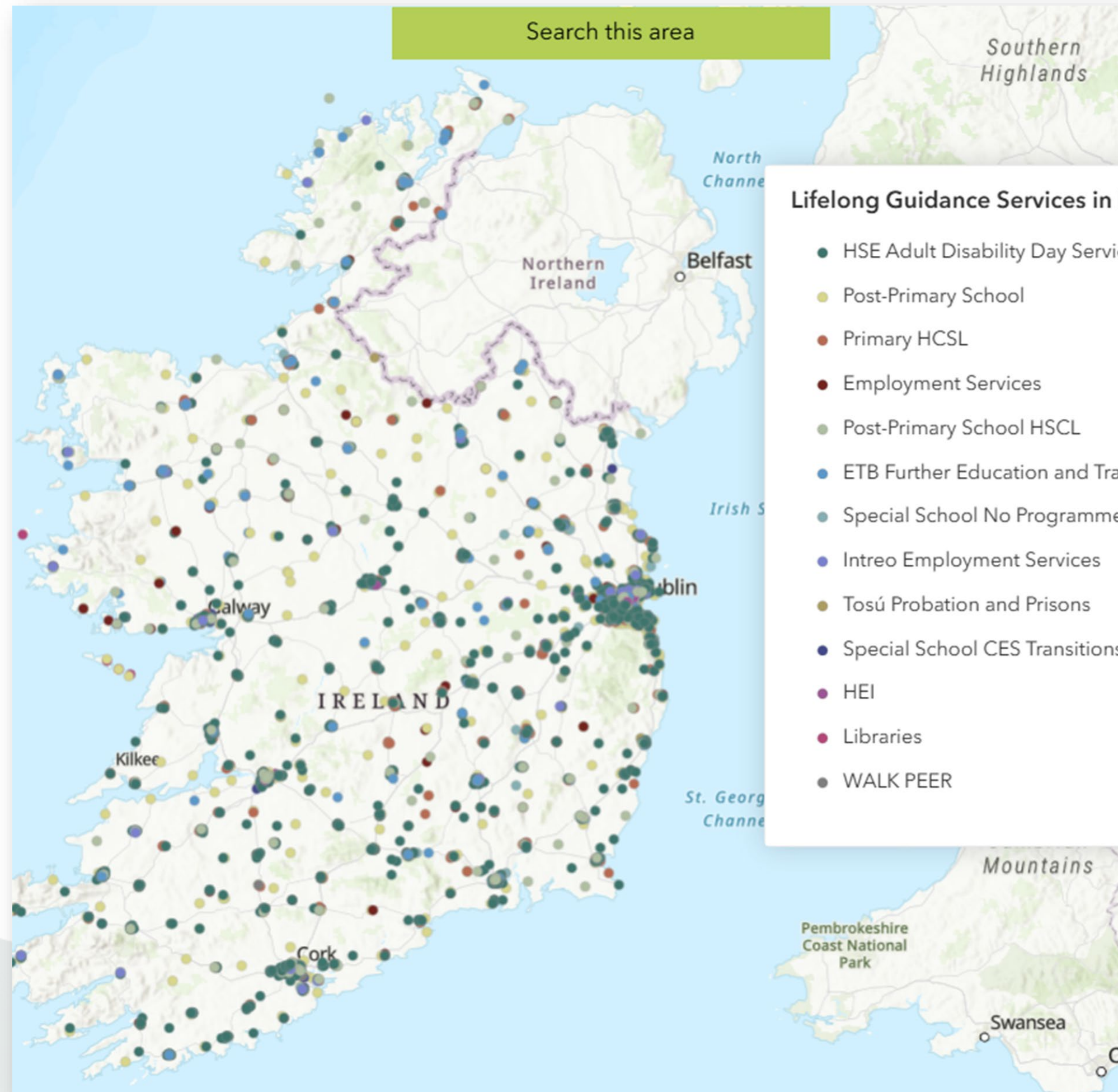
Career Guidance

Guidance and counselling

Guidance Person

Counsellor

2. Visibility



Action 1.1: Identify and map the continuum of lifelong guidance and interconnections between services in the current lifelong-guidance system.

3. Access (An Example)

Rialtas na hÉireann
Government of Ireland

**National Strategic Framework
for Lifelong Guidance: Strategic
Action Plan (2024-2030)**
Action 3.4 report

4. Existing Initiatives
- Work Placement Experience Programme (WPEP).....
 - The Wage Subsidy Scheme
 - The Work and Access scheme
 - Jobsireland.ie.....
 - Employment and Youth Engagement Charter
 - Roma and Traveller Internship Programme.....
 - The Willing, Able, Mentoring (WAM) programme.....
 - The Open Doors Initiative (ODI).....
 - Employers for Change
 - The EPIC programme
 - EmployAbility
 - Traveller Employment Programme.....
 - WorkAbility – Pobal.....
 - Youthreach.....
 - DCU GaIN.....
 - CareersPortal WorkXperience.....
 - FET guidance.....
 - Post-primary guidance
 - Internship and placement programmes in HEIs.....
 - Special Initiative for Travellers (SIT).....

Action 3.4: Seek to support all individuals including those who are marginalised or have disabilities to access person-centred opportunities such as work-shadowing/work-experience.



Rialtas na hÉireann
Government of Ireland

Go raibh míle maith agaibh

guidance@education.gov.ie