



**CEDEFOP**

European Centre for the Development  
of Vocational Training

Alphametrics (AM)



Alphametrics Ltd

**ce** *cambridge*  
*econometrics*

*connecting you to the future*

# New approaches to modelling the demand for skills

Paper presented at *Skillsnet* technical workshop on:  
Forecasting skill supply and demand in Europe

9-10 June 2009, Thessaloniki, Greece

**Ilias Livanos and Rob Wilson**

Institute for Employment Research,  
University of Warwick, United Kingdom



Researchcentrum voor Onderwijs  
en Arbeidsmarkt

Research Centre for Education  
and the Labour Market

WARWICK INSTITUTE *for*  
EMPLOYMENT RESEARCH



# Outline

- Focus on expansion demand
- Improved Data: Alphametrics (in two phases)
- Coverage (Eur27 + Norway & Switzerland)
- Modelling : New approaches will be tested
- Including more behavioural elements
- More detailed ISCED: 7 levels, ISCO 3digit

# Core LFS Data

- 1995-2007
- NACE, Rev 1, 2-digit sector of Activity
- ISCO-88, 2-digit Occupational Group
- Broad Educational Attainment Level (High/Medium/Low)
- ISCO-88, 3 digit will also be explored

# Other Data Available

- **E3ME economic indicators**
- **Micro-data from the EU-LFS**

# Modelling Occupational & Qualification Structure

- Aggregate Data from Alphametrics
- Shares broken down by: Country, Year, Sector, Occupation, Education
- Analysis for each category separately
- Extension for ISCED 0-6
- More detailed occupations

# Logit transformation of Y

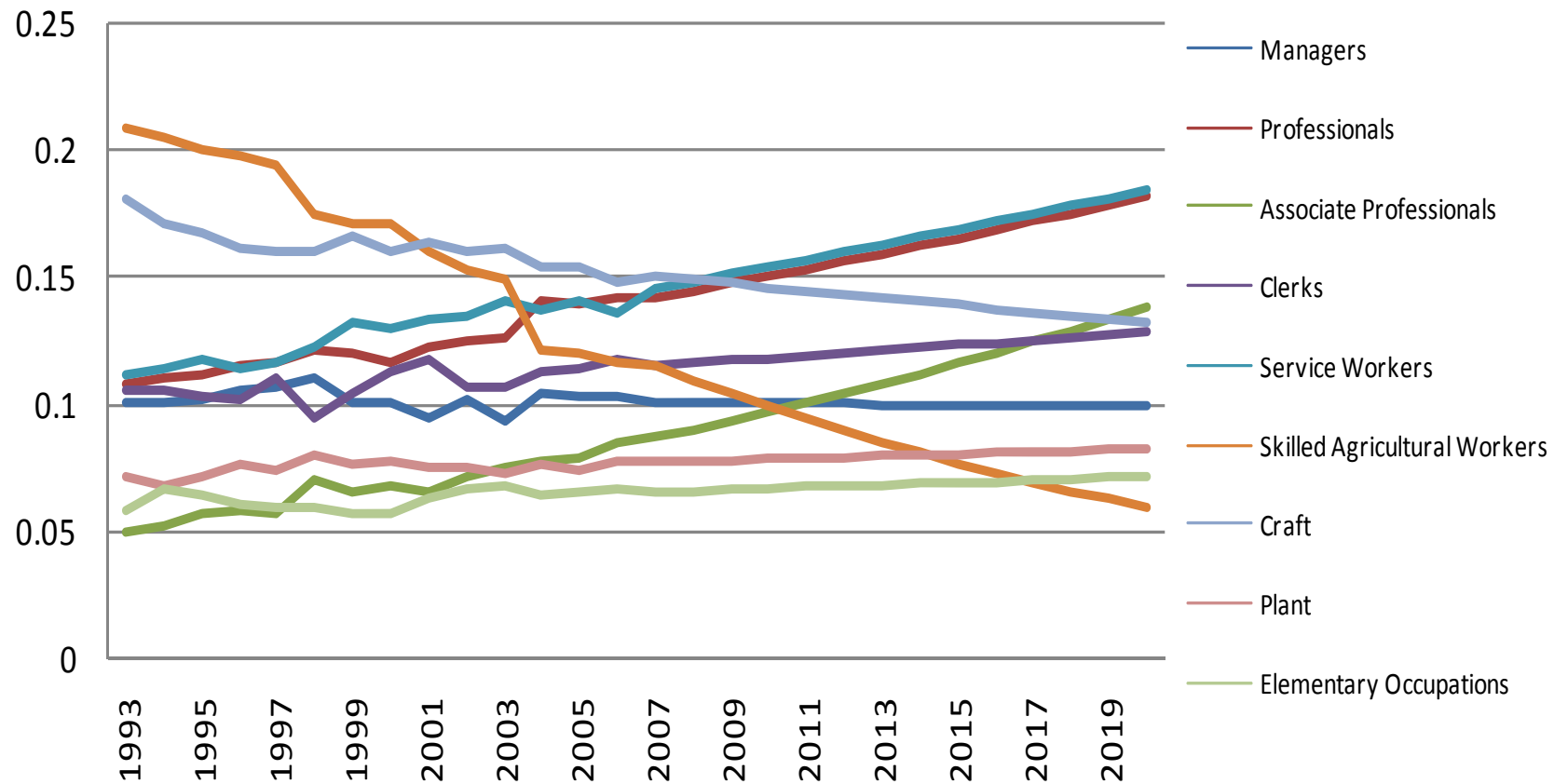
A Method for linearizing the sigmoid distribution of proportions

$$y^* = \log \left( \frac{y}{1 - y} \right) = X\beta + \epsilon$$

$y$  = proportion of occupational level  $i$

The predictions are then expressed in units of  $y$

## Broad Occupational Shares - Greece



# Looking for common patterns

- The data available effectively form a panel
- Purpose: to identify common patterns in occupational structure across countries and sectors.



# Determinants of Occupational Change

- Sectoral structure (E3ME)
- Technology
- International Trade
- Levels of economic activity
- Impact of the recession

# E3ME Data

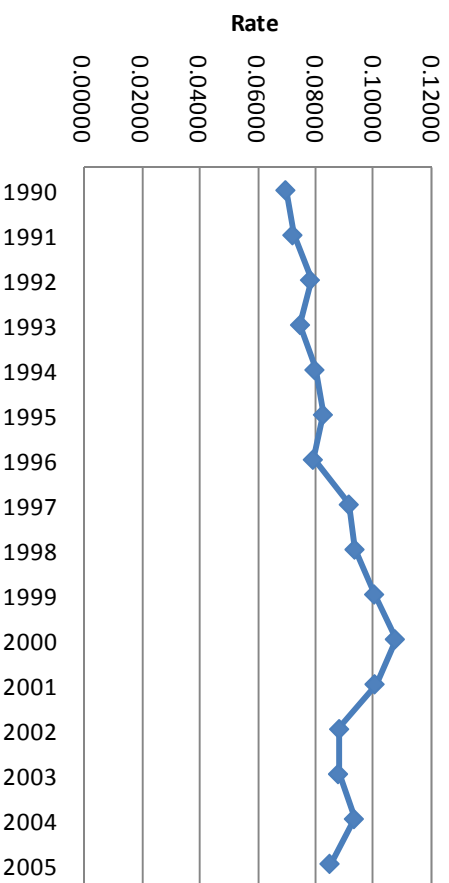
- Exports
- Imports
- Value added
- ICT investment

These indicators vary by sector and all Units are millions of Euros at 2000-based prices

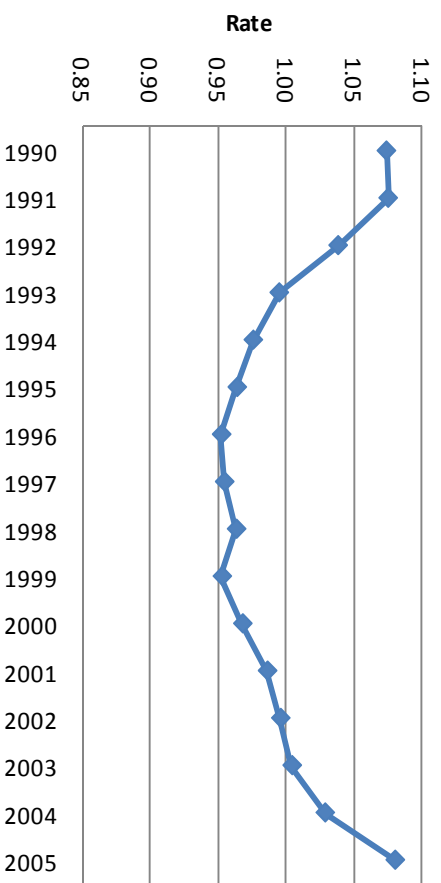
# Indicators

- Sectoral value added (this may be estimated as sectoral VA/ VA trend)
- Export volume share (exports as a percentage of domestic value-added)
- Import volume share (imports as a percentage of domestic value-added)
- ICT investment as a % of GDP as a proxy of technological change

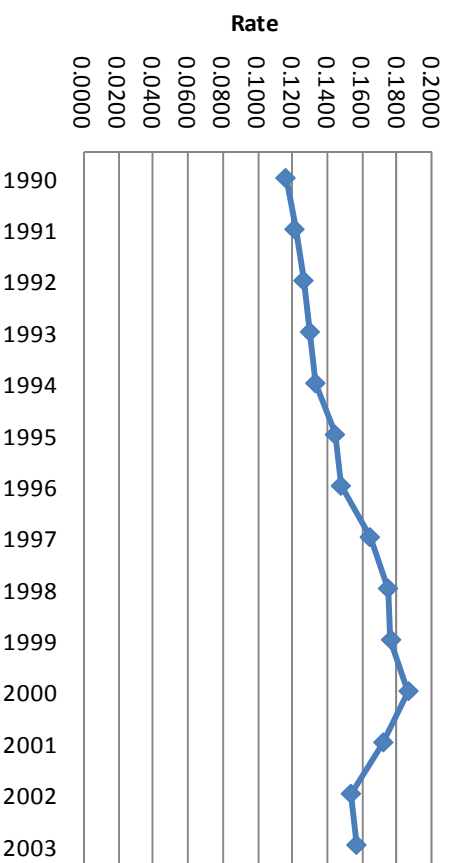
### Exports/ Value Added - GREECE



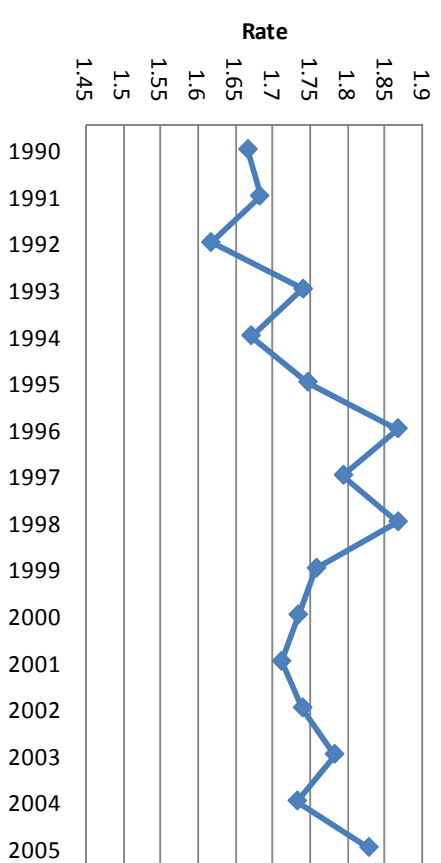
### VA / VA Trend - GREECE



### Imports/ Value Added - GREECE



### Imports/ Exports - GREECE



# Conclusions

- **Better quality data**
- **Exploration of alternative methods**
- **Further work to try to establish behavioural relationships**
- **Greater level of detail**
- **Impact of the crisis**