

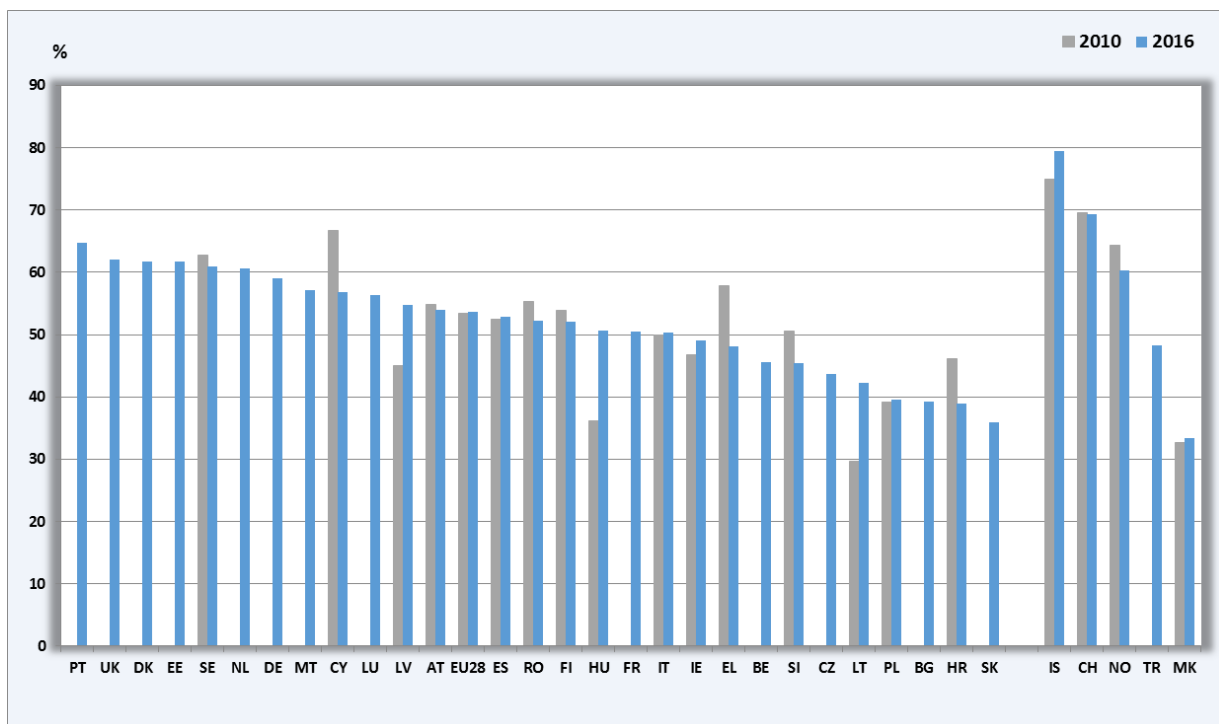
## 35. How many low-educated adults are employed?

Indicator 3065: employment rate for 20-64 year-olds with lower level of educational attainment

Low education attainment tends to diminish a person's chances of being in employment. VET can be a route to medium-level education attainment and to better access to the labour market.

The indicator below is the percentage of the population aged 20-64 with a lower level of education attainment (ISCED 0-2) who are employed. It can be compared directly to indicator No 3060 (employment rate for 20-64 year-olds).

**Figure 35** Employment rate for 20-64 year-olds with lower level of educational attainment (%)



Source: Eurostat, EU labour force survey.

## Key points

In 2016, the EU average employment rate for low-educated adults was 53.6%. Portugal had the highest employment rate for low-educated adults at 64.7%, followed by the United Kingdom (62.1%), Denmark (61.8%), and Estonia (61.8%). The rate was lowest in Slovakia (35.9%).

Between 2010 and 2016 the EU employment rate for low-educated adults has risen slightly, by 0.2 percentage points. This EU average change covers quite large differences between Member States over the same period, Hungary and Lithuania reported the largest rise (respectively by 14.6 and 12.7 percentage points) in the employment rate for low-educated adults, while Cyprus and Greece experienced the sharpest drop (respectively by 9.9 and 9.7 percentage points).

Among the non-EU countries for which data are available, the Former Yugoslav Republic of Macedonia (33.4%) had the lowest employment rate for low-educated adults (lower than the rate

in Slovakia), while the rate in Iceland (79.5%) was far higher than in any of the EU Member States.

**Table 35 Employment rate for 20-64 year-olds with lower level of educational attainment (%)**

Country code	Country	2010		2016		Recent change				
		Value	Flag	Value	Flag	Range	Country	EU28		
EU28	European Union (28)	53.4		53.6		'10-'16	↗	0.2		
BE	Belgium			45.6	b	'11-'16	↘	-1.7	↗	0.7
BG	Bulgaria			39.2	b	'11-'16	↗	2.5	↗	0.7
CZ	Czech Republic			43.7	b	'11-'16	↗	3.3	↗	0.7
DK	Denmark			61.8	b					
DE	Germany			59.0	b	'11-'16	↗	1.6	↗	0.7
EE	Estonia			61.8	b	'14-'16	↗	2.4	↗	1.8
IE	Ireland	46.7		49.0		'10-'16	↗	2.3	↗	0.2
EL	Greece	57.8		48.1		'10-'16	↘	-9.7	↗	0.2
ES	Spain	52.5		52.9		'10-'16	↗	0.4	↗	0.2
FR	France			50.5	b	'14-'16	↘	-2.1	↗	1.8
HR	Croatia	46.2		38.9		'10-'16	↘	-7.3	↗	0.2
IT	Italy	49.9		50.3		'10-'16	↗	0.4	↗	0.2
CY	Cyprus	66.8		56.9		'10-'16	↘	-9.9	↗	0.2
LV	Latvia	45.1		54.8		'10-'16	↗	9.7	↗	0.2
LT	Lithuania	29.6		42.3		'10-'16	↗	12.7	↗	0.2
LU	Luxembourg			56.4	b	'15-'16	↘	-2.0	↗	1.0
HU	Hungary	36.1		50.7		'10-'16	↗	14.6	↗	0.2
MT	Malta			57.1	b	'11-'16	↗	6.9	↗	0.7
NL	Netherlands			60.7	b	'13-'16	↗	0.4	↗	2.2
AT	Austria	54.9		53.9		'10-'16	↘	-1.0	↗	0.2
PL	Poland	39.2		39.5		'10-'16	↗	0.3	↗	0.2
PT	Portugal			64.7	b	'11-'16	↘	-0.5	↗	0.7
RO	Romania	55.3		52.3		'10-'16	↘	-3.0	↗	0.2
SI	Slovenia	50.5		45.5		'10-'16	↘	-5.0	↗	0.2
SK	Slovakia			35.9	b	'11-'16	↗	6.3	↗	0.7
FI	Finland	53.9		52.0		'10-'16	↘	-1.9	↗	0.2
SE	Sweden	62.8		61.0		'10-'16	↘	-1.8	↗	0.2
UK	United Kingdom			62.1	b	'11-'16	↗	6.5	↗	0.7
MK	The Former Yugoslav Republic of Macedonia	32.7		33.4		'10-'16	↗	0.7	↗	0.2
IS	Iceland	74.9		79.5		'10-'16	↗	4.6	↗	0.2
NO	Norway	64.3		60.3		'10-'16	↘	-4.0	↗	0.2
CH	Switzerland	69.6		69.3		'10-'16	↘	-0.3	↗	0.2
TR	Turkey			48.3	b	'14-'16	↗	0.8	↗	1.8

Arrows ↗ or ↘ signal a positive or negative change. Arrow → indicates: no change.

The 2014 "b" flags in the Eurostat online tables have been ignored, except for Estonia, on the basis of other relevant Eurostat metadata.

(b) Break after 2010. Therefore baseline data not included.

Source: Eurostat, EU labour force survey.

Please cite this document as: Cedefop (2018). 35. How many low-educated adults are employed? Indicator 3065: employment rate for 20-64 year-olds with lower level of educational attainment, (2017 update) In: Cedefop. *Statistics and indicators: Statistics and graphs*. <http://www.cedefop.europa.eu/en/publications-and-resources/statistics-and-indicators/statistics-and-graphs/35-how-many-low-educated>