

The Skillsnet project on Medium-term forecasts of occupational skill needs in Europe: *Country Workbooks*

Paper presented at the Workshop on Medium-term forecast of occupational skill needs in Europe: Interim results.

3RD TECHNICAL WORKSHOP,
May 7-8 2007, Maastricht, Netherlands

Professor Rob Wilson

Institute for Employment Research,
University of Warwick, United Kingdom



Researchcentrum voor Onderwijs
en Arbeidsmarkt

Research Centre for Education
and the Labour Market

WARWICK INSTITUTE *for*
EMPLOYMENT RESEARCH

Celebrating 25 years



Summary

- **Purpose of the *Country Workbooks***
- **Overview of contents**
- **“Series” (vintages of results)**
- **Other workbooks**
- **Sources and ownership of data:
Conditions for access & use**

Aims:

- **Dialogue**
- **Dissemination**
- **Analysis**

Overview of contents of the workbooks

- **Main workbooks:**
 1. E3MEdata (sectoral data)
 2. EULFSdata (detailed LFS data)
 3. EUForecastModel (combination of 1 & 2)
 4. MultiCountry (cross country comparisons)

The “*Country Workbooks*”

- **Main worksheets in EUForecastModel.xls:**
 - Info
 - Manager
 - Summary tables
 - Summary charts
 - Basic data (all, gender & status)
 - Names, aggregations

“Manager” sheet

Summary Tables						
Worksheets:		1st	2nd	3rd	4th	5th
SummaryTable1	Existing years	1985	1995	2005	2015	2025
SummaryTable2	Set new years here:-	1985	1995	2005	2015	2025
SummaryTable3						
SummaryTable5						
SummaryTable6						
SummaryTable10						
SummaryTable11						

Summary Charts			
Worksheets:		First	Last
SummaryChart2	Existing years	1995	2025
SummaryChart6	Set new years here:-	1995	2025

Install new Industrial and Occupational data
Install

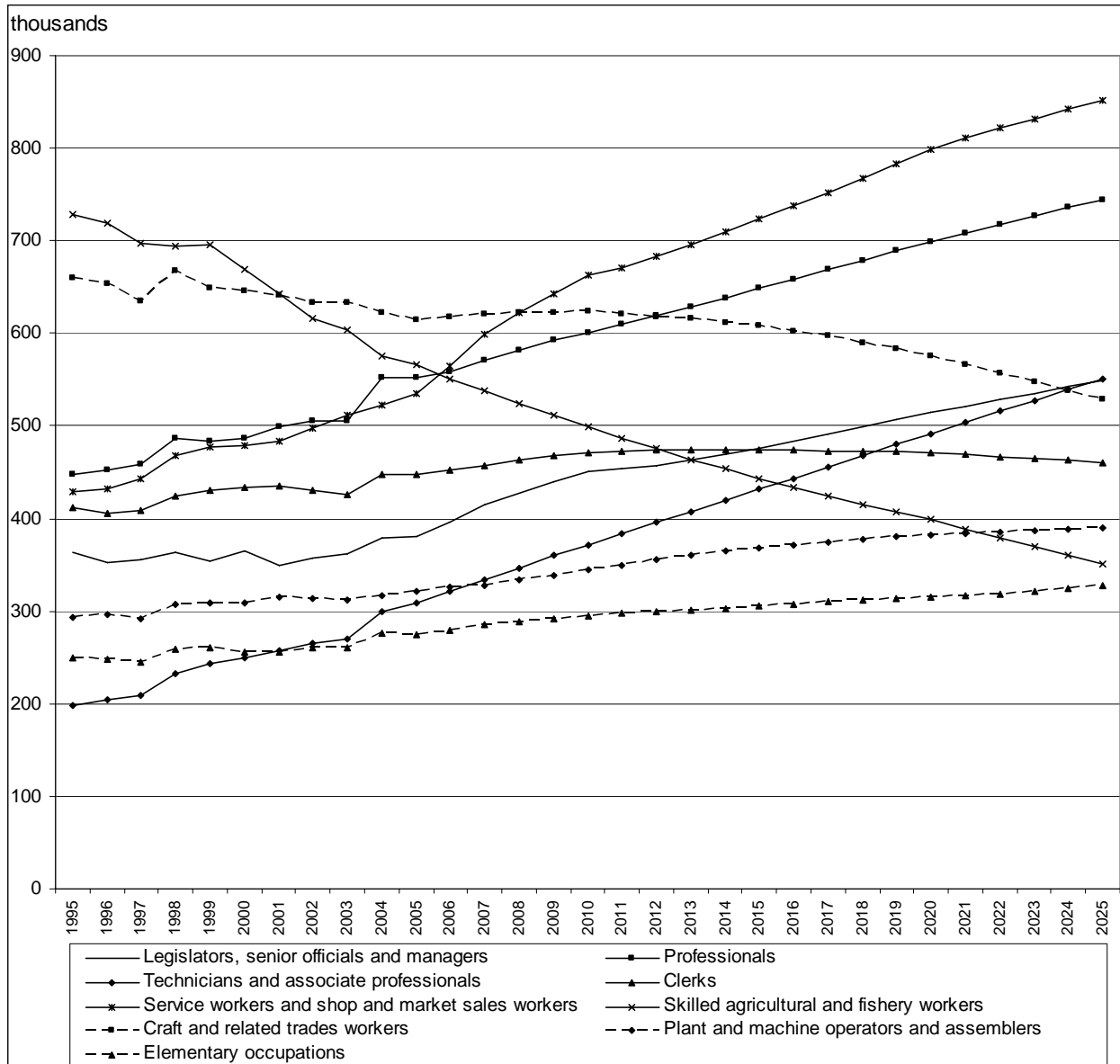
Pivot Table of the projections
Create

Typical Tables

Summary Table 6 Employment Change by Occupation, 1985-2025

Levels	thousands					thousands		
	1985	1995	2005	2015	2025	2005-2025 Net Change	Replacement Demand	Total Requirement
01 Armed Forces	67	38	46	56	70	23	25	48
11 Legislators and senior officials	3	1	1	1	1	0	1	1
12 Corporate managers	23	37	56	83	107	50	40	91
13 Managers of small enterprises	182	325	323	392	442	119	248	367
21 Physical, mathematical and engineering science professionals	51	66	83	95	104	21	50	71
22 Life science and health professionals	82	67	83	95	102	20	65	85
23 Teaching professionals	294	191	238	295	356	118	192	309
24 Other professionals	112	124	148	165	182	34	105	139
31 Physical and engineering science associate professionals	42	56	72	89	102	30	43	74
32 Life science and health associate professionals	38	39	65	91	119	54	45	99
33 Teaching associate professionals	7	6	9	13	18	9	6	14
34 Other associate professionals	59	98	163	239	312	149	107	256
41 Office clerks	376	337	346	331	288	-58	250	192
42 Customer services clerks	49	76	101	143	172	71	66	137
51 Personal and protective services workers	249	243	298	384	456	158	189	348
52 Models, salespersons and demonstrators	116	186	237	340	395	158	131	289
61 Skilled agricultural and fishery workers	918	729	566	443	350	-216	468	252
71 Extraction and building trades workers	233	259	284	309	262	-21	175	154
72 Metal, machinery and related trades workers	142	176	174	172	173	-1	112	112
73 Precision, handicraft, craft printing and related trades workers	32	30	27	24	21	-6	16	11
74 Other craft and related trades workers	212	194	130	102	73	-58	91	33
81 Stationary plant and related operators	19	20	20	23	24	4	13	17
82 Machine operators and assemblers	52	73	88	106	110	23	58	81
83 Drivers and mobile plant operators	151	200	214	240	256	41	158	199
91 Sales and services elementary occupations	149	148	187	218	248	61	120	181
92 Agricultural, fishery and related labourers	34	40	50	68	68	17	32	49
93 Labourers in mining, construction, manufacturing and transport	79	62	37	19	11	-26	24	-1
All occupations	3,773	3,820	4,047	4,536	4,822	776	2,833	3,608

Typical Charts



Source data and links to the modules

- **Main data sources and links to modules**
 - E3ME results (detailed sectoral employment)
 - LFS data, published & micro datasets (occupational and qualification dimensions)
 - Econometric and other parameters and assumptions
 - Results:
 - Individual *Country workbooks*
 - Other workbooks

Possibilities for changing data and assumptions

- **Plugging in different sectoral and occupational data and assumptions**
- **Alternative assumptions about:**
 - **Expansion demands by occupation and qualification**
 - **Replacement needs**

Results in Other Workbooks

- **Cross country comparisons**
- **Comparisons between series of results**

Interim Results

(Modules 1 and 2 only)

- **Revised Results (Using the New macro and Sectoral Employment Scenario)**
- **Typical individual country results (Greece) *Series 3 & 4***
 - by sector
 - by occupation
 - replacement demands
- **Pan European results *Series 3 & 4***
 - by sector; occupation & replacement demands

The different *Country Workbook Series*

Country Work- book Series	E3ME	LFS	Constrained match	to	Expansion demand	Qualifications demand	Replacement demand	Published
Series 1	Ad hoc scenario	Published data	E3ME		Time series extrapolation	Time series extrapolation	Average rates imposed	Wilson (2006)
Series 2	Ad hoc scenario	Published data	LFS (E3ME growth rates only)		Time series extrapolation	Time series extrapolation	Average rates imposed	Wilson (2007)
Series 3	Interim revised scenario	Published data	E3ME		Time series extrapolation	Time series extrapolation	Average rates imposed	Wilson (2007)
Series 4	Interim revised scenario	Published data	LFS (E3ME growth rates)		Time series extrapolation	Time series extrapolation	Average rates imposed	Wilson (2007)
Series 5		Micro data set	To be decided					
Series ?	Final scenarios	To be decided	To be decided		Econometric model	Econometric model	Cohort component model	Final Report
Possible alternatives	Alternative macro and Sectoral scenarios	Published data; Micro data set; EuroFound data set.	E3ME; LFS; Other		Time series extrapolation Econometric models (various specifications)	Time series extrapolation Econometric models (various specifications)	Fixed rates Cohort component model Alternatives?	

Ownership of data

- **Main data sets:**
 - National accounts sectoral data (Eurostat, etc)
 - E3ME (CE)
 - LFS micro and other data (Eurostat, etc)
 - Other models and parameters and models (IER/ROA)
 - Results - *Country* and other workbooks, including cross country comparisons (CE/IER/ROA/Cedefop)
- **The latter will be made freely available to members of *Skillsnet***
 - (and any others prepared to assist), subject to agreeing not pass the data on to third parties, and giving due acknowledgement in any published work using the material that it is from the Skillsnet/Cedefop project

CONTACT DETAILS FOR FURTHER INFORMATION:

Rob Wilson

Institute for Employment Research

University of Warwick

COVENTRY, CV4 7AL

R.A.Wilson@warwick.ac.uk

Tel: +(44) 2476-523530