



UC Leuven
Limburg

MOVING MINDS

Cooperation between HE and enterprises in the field of continuous development: examples from UCLL



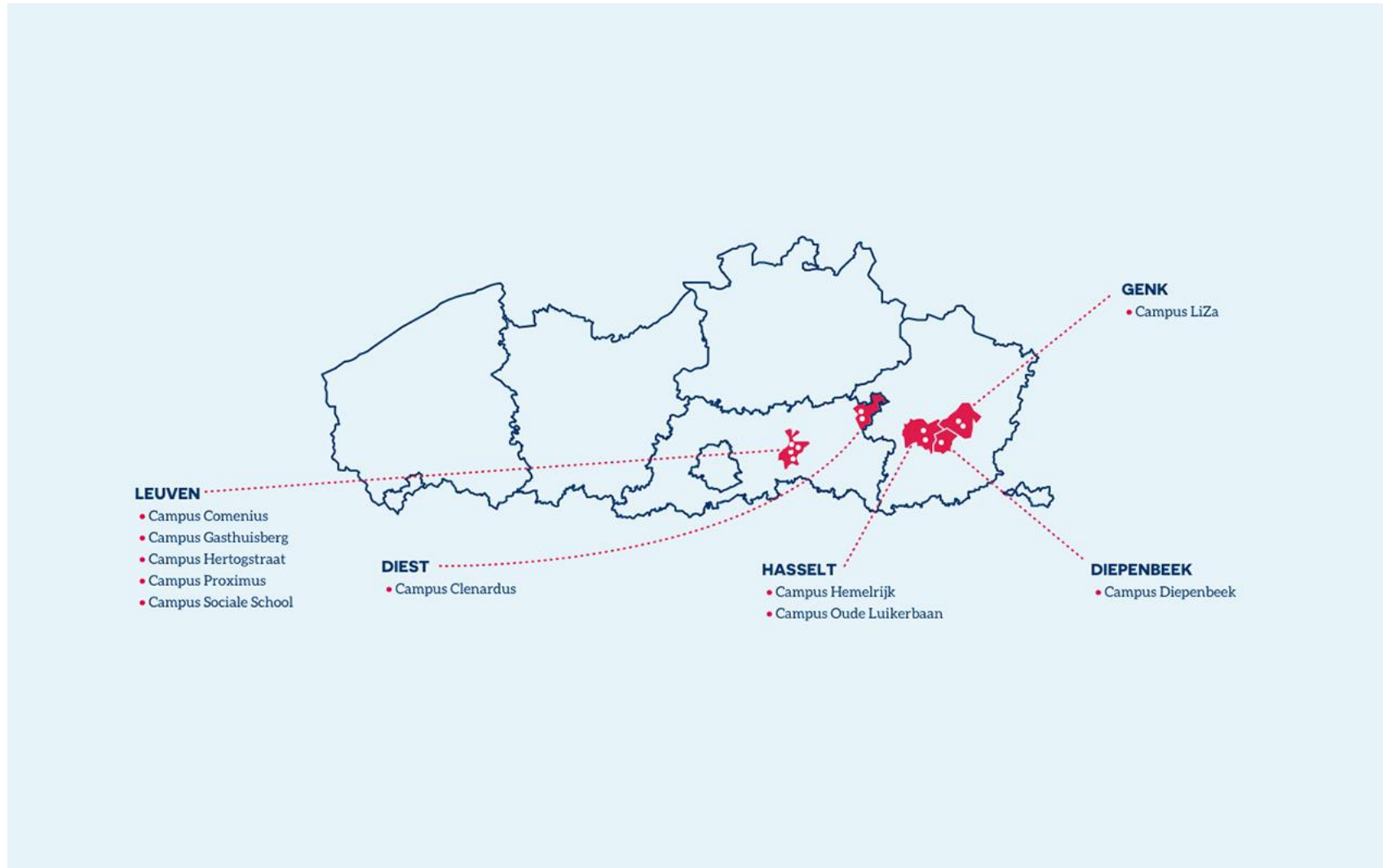
UC Leuven
Limburg

MOVING MINDS

**WE ARE
THE MOVING
MINDS**



UCLL on the map of Flanders





KU Leuven Association



Higher education in Flanders





EFQ6: Profession-oriented bachelor

- Teacher training
- Business studies
- Engineering
- Social care
- Health care



Extension of our learning network to EQF 5

- Legal framework of the Flemish government
- Linking EQF 5 providers with EQF 6
- in order to stimulate the 'salmon principle'
- linking work field and education
- near future: EQF 5 will be integrated in institutions EQF 6
- partnerships level 5 are regionally based



Experience and results of the FLLLEX project

- what is our niche?
- lack of knowledge among institutions of HE of the territory of LLL providers
- idem for the typology of learners
- difficulty in captivating the needs of employers
- flexibility of answering those needs outside the educational structures
- UCLL did not use the tools for self-assessment scan due to its merger as of 2013



Projects to overcome these barriers

- OOF Workbased learning
 - to familiarize initial degree programmes with the WBL
- ESF Masterclasses in WBL
 - to link workfield with the WBL
- Research and consultancy
- Postgraduates
- BanaBa's
- Continuing training programmes



OOF Work-based learning

- Goal: to support the implementation of work-based learning for 25+ students in Flanders
- Research part:
 - threats and opportunities from and for WBL-programmes at different levels
 - programmes for the specific needs of 25+ students are no copy of the regular programme for regular students
 - need for collaboration and sharing expertise in Flanders



OOF Work-based learning

- Development part: development of 4 tools
(<http://associatie.kuleuven.be/p/werkpleklerin>)
 - profile of teachers and management within WBL
 - model for a collaboration agreement between a HE-provider and an external organisation
 - tool for an introducing meeting on WBL between the HE-provider and an external organisation
 - reflection questions for the development of a WBL-programme



ESF-project Masterclass in Work-based learning

- Transnational project – partner: Letterkenny Institute of Technology
- Objective:
 - design and develop a general training programme that will equip WBL external organisations and HE-providers with the knowledge, skills and competences required to collaborate in WBL partnerships
 - deliver a WBL programme



ESF-project Masterclass in Work-based learning

- Focus:
 - a partnership between an external organisation and a HE-provider is established
 - the learners involved are employed in an external organisation (paid or not paid)
 - the learning programme derives from the needs of the workplace and the learner
 - learning is taking place as an integrated part of projects/tasks completed in the workplace
 - the learning outcomes are assessed by the HE-provider



ESF-project: Masterclass in Work-based learning

- Modules of a flexible WBL-masterclass:
 - commissioning WBL: what and why?
 - managing and planning WBL
 - partnership building
 - programme design
 - learning activities
 - support and coaching
 - assessment of WBL



Examples of cooperation between HE and enterprises other than WBL

- Both level 5 and 6 work together with enterprises and organisations (social care, culture,)
- Not only for internships
- Projects within the student's curriculum or extracurricular
 - analysing insurance portfolio of SME
 - information sessions on legal rights and social security for workers at the closure of Ford Genk
 -

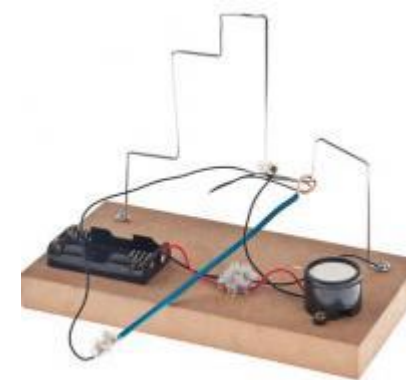
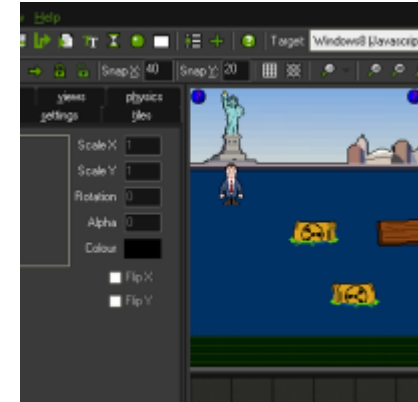


Academy for Science and Technique

- Society is in need of more STEM profiles
- Activities for children in order for them to discover and develop their talents within sciences and techniques
- Cooperation with enterprises for materials, sponsoring, ...
- Students (teacher training) are in charge (internship)



Workshops age 4 - 11





LLL for teachers: SpinOff & Quantum Spinoff

- Connecting pupils and their (science) teachers with high-tech research and entrepreneurship
- Working together with researchers, entrepreneurs on how to create an innovative product or service based on modern science and technology
- Enterprises offer site visits like research labs



LLL for teachers





Technique and science in social care

- Involving students from level 4, 5 and 6 working together in project groups on cases from different enterprises and organisations
- Interdisciplinary groups (f.i. business, engineering, social care)
 - music band for physical disabled children
 - bathroom for demented elderly people
 - agenda tool for game addict young people with autism spectrum disorders
 - ...



Postgraduate programmes

- Bachelor degree is compulsory
- Recognition of Prior Learning
- Teaching staff mainly from the field of activity
- At the request of the sector
- Enterprises some times pay part of the fee



Examples

- Process-oriented leadership
- Content and language integrated learning
- Palliative care
- Real estate
- Business analysis (ERP)
- Mediation in family matters
- International management
- ...



BanaBa's

- Unique concept: bachelor after bachelor (one year)
- On request of and with input of the field
 - Tax expertise
 - International cooperation North-South
 - Advanced business management
 - Mental healthcare
 - Special educational needs
 - ...



Continuing training programmes

- Looking with the eyes of a demented person
- UCLL Academy for Marketing and Innovation
- VAT
- HR Masterclass
- Strategic planning for SME
- Voice dialogue
- Cooling techniques
- Inclusive education
- ...



- More information? Contact hilde.bottu@ucll.be