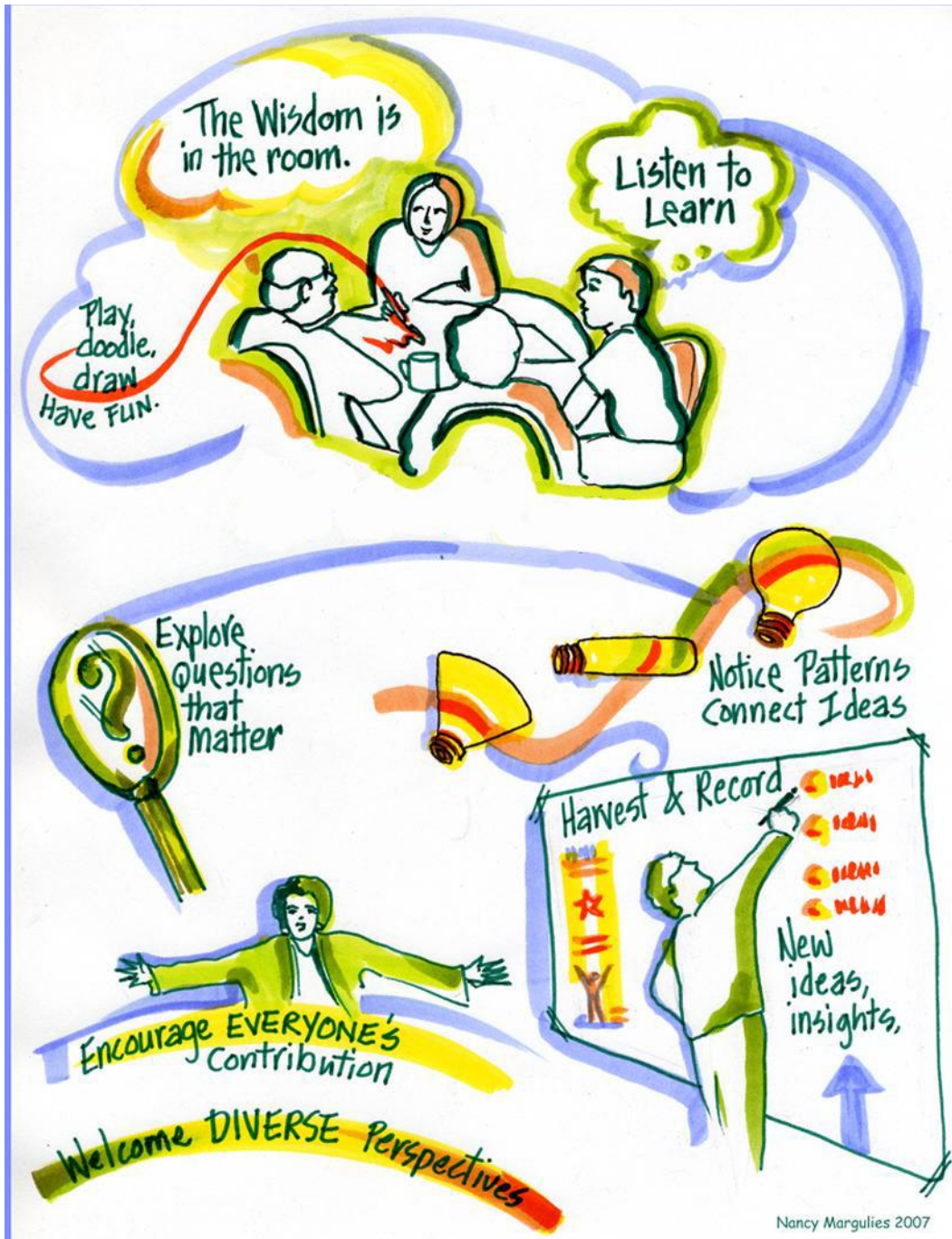


Guidelines for the parallel working sessions

26 April afternoon 14:30-17:30



The aim of the parallel sessions is to give the opportunity to participants to learn from country cases and to share their national experience on two topics which address important policy debates:

- HOW TO ENSURE LINKS BETWEEN CURRICULUM AND ASSESSMENT POLICIES AND PRACTICES?
- HOW TO IMPROVE TEACHING, LEARNING AND ASSESSMENT?

In each session, two case studies will be presented. After each case study, participants will have the opportunity to ask for clarifications, if needed.

Following the presentations of the two country case studies, participants will be divided into two round tables, devoted to each of the presented country case studies. They may choose to sit in one of these tables according to their preference; however a balanced distribution should be ensured.

In each table, one facilitator will be nominated among the participants. The facilitator should read carefully the questions found on the A3 paper on the table (see Questions for the round tables below). These are the questions on which the participants should reflect and discuss. The Facilitator will animate the discussions and take note of the main points in the flipchart.

When discussions in the round table are finalised, the facilitators of the two tables will present the key messages of the discussions to all participants and show flip charts produced.

Timetable of the parallel session

14:30-15:00	Presentation of first case study including questions by participants
15:00-15:30	Presentation of the second case study including questions by participants
15:30-16:30	Round table discussions Participants split into table according to their interest on the case study they heard (max. people in each table 11). In each table, one participant should be nominated as Facilitator. The Facilitator reads carefully the questions found on the A3 paper on the table. These are the questions on which the participants should reflect and discuss. The Facilitator will animate the discussions and take note of the main points in the flipchart.
16:30-17:00	<i>Coffee break</i>
17:00-17:30	The facilitators of the two tables present the key messages of the discussions to all participants and show flip charts produced.
17:30	End of the session
17:30-18:00	The facilitators of the two tables work together with the Rapporteur to sum up key messages of the two cases presented and the discussions held in the round tables. The key messages will be presented by the Rapporteur the following morning.

QUESTIONS FOR THE ROUND TABLES

Afternoon session: 14:30-17:30



SESSION 1.

ENSURING LINKS BETWEEN CURRICULUM AND ASSESSMENT POLICIES AND PRACTICES:

EVIDENCE FROM GERMANY AND THE NETHERLANDS



1. Which are the commonalities and differences between the country case of your table and your country's approach to align standards, curricula and assessment?
2. What are the strengths and weaknesses when linking curriculum with assessment policies and practices in your country?
3. Which challenges still need to be addressed?
4. In what ways do you believe outcome-oriented curricula and new assessment methods benefit individual learners? Is there any evidence from your country?

SESSION 2.

IMPROVING TEACHING, LEARNING AND ASSESSMENT: EVIDENCE FROM FINLAND AND GREECE



1. Which are the commonalities and differences between the country case of your table and your country's approach to improve teaching and assessment?
2. How the learning environments are organised in your country? How balance between theory and practice and linking school and workplace learning are ensured?
3. How teachers and schools are best supported to apply innovative teaching and assessment methods in your country?
4. In what ways do you believe innovative teaching and assessment methods benefit individual learners? Is there any evidence from your country?