

Orienta4YEL




Date of creation

2019

Description

Orienta4YEL project provides educational institutions and involved agents with a set of strategies and tutorial actions, which have been designed according to a previous diagnostic, to support them on their task of preventing young people from early leaving and address their specific individual needs.

Beneficiaries

-  **Unemployed young people**
-  **Learners at risk of early leaving from education and training**
-  **Learners at transition points and/or uncertain about career aspirations**

Orienta4YEL target group are young people who are early leavers or at risk of early leaving within different educational stages, such as secondary compulsory education, initial/basic vocational education and training (VET) programmes (level 1), intermediate VET programmes (level 2). This target group is composed by youngsters aged between 12-21 who:

- a) do not finish lower secondary education (compulsory secondary education);
- b) are at risk of not finishing lower secondary education (compulsory secondary education);
- c) finish lower secondary education (compulsory secondary education) but do not make the transition to upper secondary education;
- d) make the transition to upper secondary education and are at risk of early leaving.

Orienta4YEL also identifies the educational stakeholders who are involved in working with and supporting this group of young people.

Countries



Germany



Portugal



Romania



Spain



United
Kingdom

Education level and sector

Secondary education Lower secondary education

Lower secondary vocational education and training (school-based)

Type of policy/initiative

Prevention Intervention Compensation

Level of implementation / Scope

Provider level

Stage of implementation

On-going

Aims of policy/initiative

Orianta4YEL project aims to develop, implement and evaluate innovative methods and practices focused on mechanisms of orientation and tutorial actions to foster inclusive education of young people who are at risk of early leaving, in formal and non-formal educational contexts.

The objectives of this project are:

1. To develop a data collection tool to identify risk factors and support mechanisms of early leaving.
2. To develop, implement and evaluate mechanisms of orientation and tutorial action with young people who are early leavers or at risk of early leaving.
3. To support educational stakeholders (teachers, trainers, educators, leaders of educational institutions, and other professionals) in dealing with young early leavers or at risk of early leaving, through orientation and tutorial actions.
4. To establish learning networks on tackling early leaving through mechanisms of orientation and tutorial actions.
5. To identify the aspects of effective leadership in educational institutions that foster educational and social inclusion of young people who are early leavers or at risk of early leaving in educational institutions.

Features and types of activities implemented

Orianta4YEL develops a set of 13 types of strategies (prevention, intervention and compensation) addressed to different risk factor of early leaving (personal challenges, social relationships, institutional factors and structural factors) and focused on three levels (individual level — psycho-pedagogical actions —, institutional level — institutional actions — and educational system level — educational system actions —). Each one of these strategies suggests actions to be developed within its framework and details information about beneficiaries, who is in charge of the strategy, implementation timeline, cost of the

strategy, guidelines to its development, needed resources and related resources.

Resources

Erasmus + Project number: 604501-EPP-1-2018-1-ES-EPPKA3-IPI-SOC-IN

Evaluation of the measure

Orienta4YEL project is still running. The strategies will be implemented and evaluated during the academic year 2020-2021.

All the results and activities of the project are available on <https://www.orienta4yel.eu/>

Evidence of effectiveness of the measure

Seeking to contribute to the improvement of initiatives addressed to early leaving through helping to retain learners at risk in education and training and reengaging early leavers back to it, Orienta4YEL works on an intervention proposal to be applicable in any member state. This intervention proposal provides educational institutions and agents, which are involved in the project, with a set of 13 strategies and tutorial actions. These have been designed according to a previous diagnostic to support educational agents on their task of preventing young people's risk of early leaving in each one of their specific contexts. Likewise, these strategies and tutorial actions will be implemented by the educational institutions and agents during one academic year. Nevertheless, before implementing them, Orienta4YEL provides training and develops an evaluation proposal. This latter aims to provide evidence of effectiveness of the strategies and tutorial actions that each one of the educational institutions and agents will implement in their context.

Success factors

Strategies developed within the framework of Orienta4YEL are designed based on the development of a diagnostic, in five countries, of risk factors and support mechanisms to prevent early leaving, to support educational agents in dealing with young people who are early leavers or at risk of early leaving.

Orienta4YEL also establishes learning networks and identifies effective leadership in educational institutions that promote young people's educational and social inclusion.

Contact details for further information

Contact name

Patricia Olmos Rueda

Contact telephone

(+34) 935811677 / 686106988

Contact website

[Official Orienta4YEL website](https://www.orienta4yel.eu/)

Contact email

patricia.olmos [at] uab.cat

Related intervention approaches



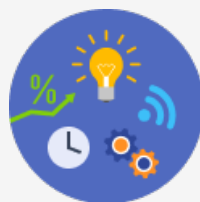
Community involvement



Comprehensive support to tackle complex needs



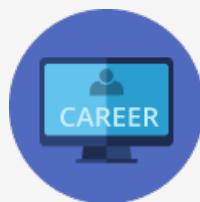
Counselling to address barriers to learning



Developing employability skills



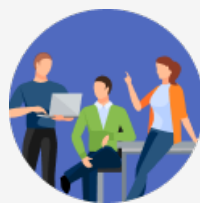
Flexible education and training systems



Guidance: supporting youth to manage their careers



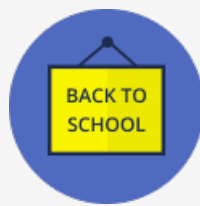
Identification of learners at risk of early leaving



Inclusive work-based learning environments



One-to-one support through coaching or mentoring



Second chance measures



Tailored learning pathways