

Teachers' professional development

Description

Continuing professional development (CPD) of teachers is one of the most important approaches for preventing ESL.

Improving educators' competencies (e.g. communication, discipline management and cooperation competencies) implies improving students' educational experience and reducing their risk for ESL.


This articles outlines how CPD should intertwine the different modes (e.g. study groups, self-reflection etc.) taking teachers' motivation, interests and their stage of professional development into account.

Read the publication in the link below.

Countries

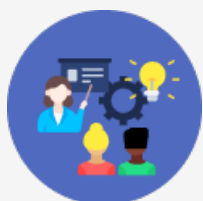
 [EU level](#)

Downloads

 [Teachers' professional development](#)

[EN](#)

Related intervention approaches



**Professional development
for inclusive teaching and
training**



Community involvement

Source URL: <https://www.cedefop.europa.eu/en/en/tools/vet-toolkit-tackling-early-leaving/resources/teachers-professional-development>