

# The impact of eTwinning on teachers' wellbeing

*Monitoring report 2024*

## Description

---

This full monitoring report examines the impact of eTwinning on teachers' wellbeing through a mixed-methods approach combining survey data and qualitative interviews. Findings suggest that teachers involved in eTwinning report high levels of teaching efficacy, reflecting confidence in their abilities and in meeting the demands of their work. The collaborative and innovative character of eTwinning appears to support job satisfaction, teacher retention and overall wellbeing. At the same time, the report finds a more limited effect on school connectedness, pointing to the need for stronger collaborative practices at school level, including through the implementation of eTwinning Schools' mission statements.


## Countries

---

 EU level

## Downloads

---

 The impact of eTwinning on teachers' wellbeing

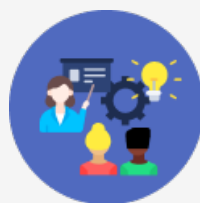
EN

## Related intervention approaches

---



**Digital inclusion and well-being**



**Professional development for inclusive teaching and training**

---

Source URL: <https://www.cedefop.europa.eu/en/en/tools/vet-toolkit-tackling-early-leaving/resources/impact-etwinning-teachers-wellbeing>